

# CD 25

## *Blomstringstid*



20 modeller.

Uden beskrivelser af arbejdsgang.

Nederdele, bluser, bukser, toppe, kjoler

## **Personal Pattern — Perfekt Pasform**

*Et skridt foran i modesyning*

For flere informationer og nyheder klik ind på

[www.pppp.dk](http://www.pppp.dk)

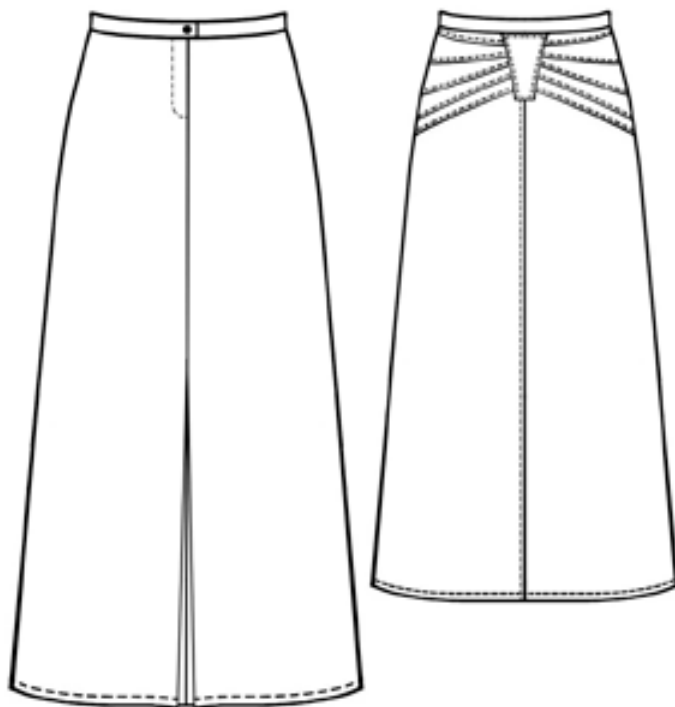
CD SNITMØNSTRE — SÅ NEMT ER DET:

- Sæt cd'en i computeren — programmet starter op af sig selv
- Indtast personlige mål:
  - I højde
  - II brystvidde
  - III taljevidde
  - IV hoftevidde
- Vælg model
- Print snitmønstret ud fra din egen printer
- Sæt arkene sammen
- Klip og sy

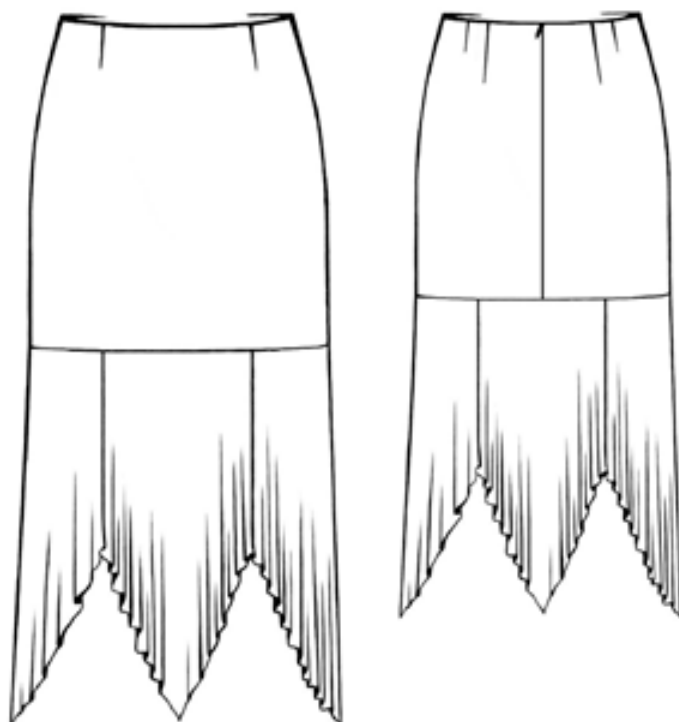
God fornøjelse

*Olga Christensen*

5415



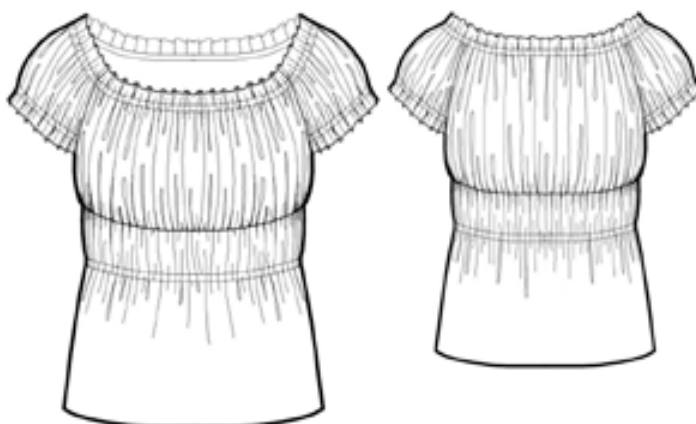
5416



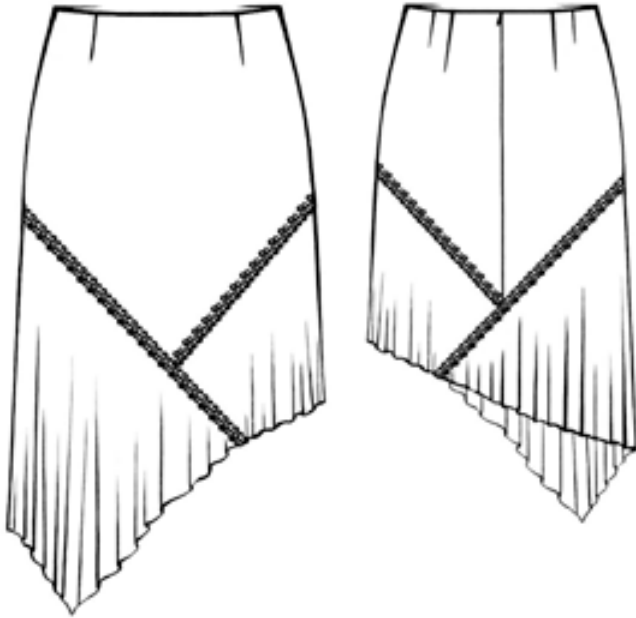
5417



5418



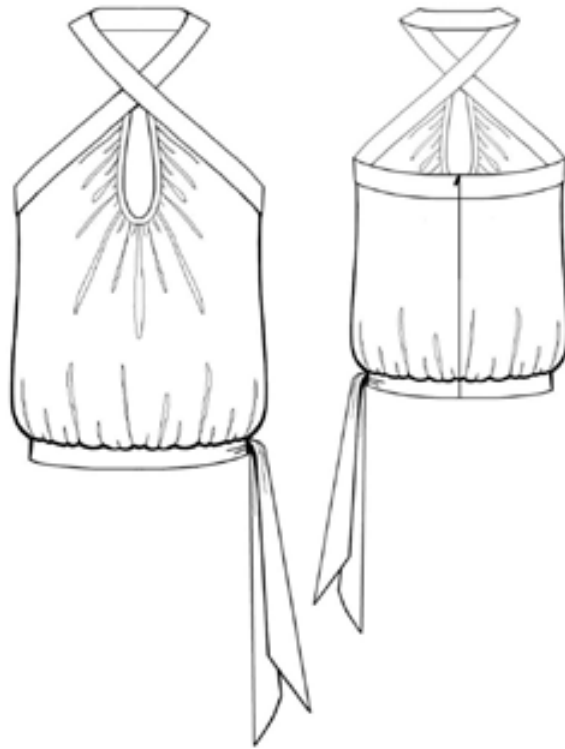
5419



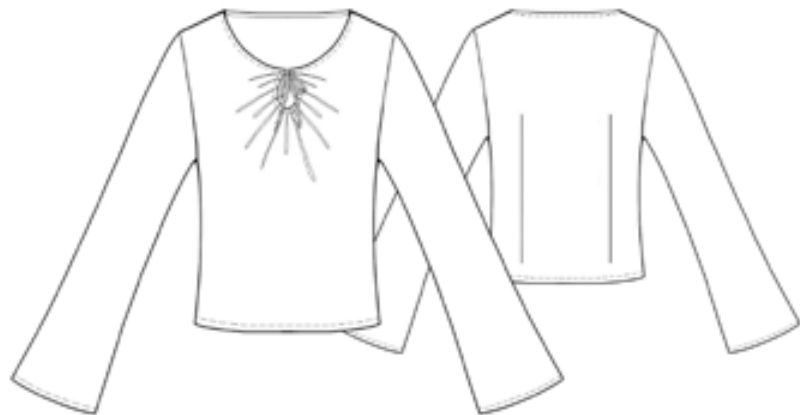
5420



5421



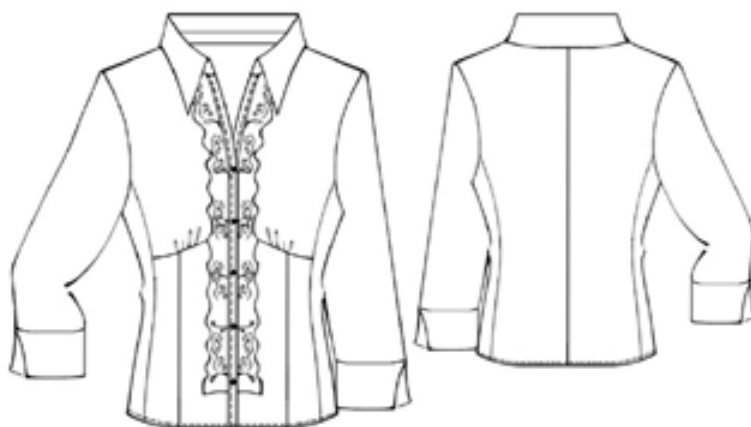
5422



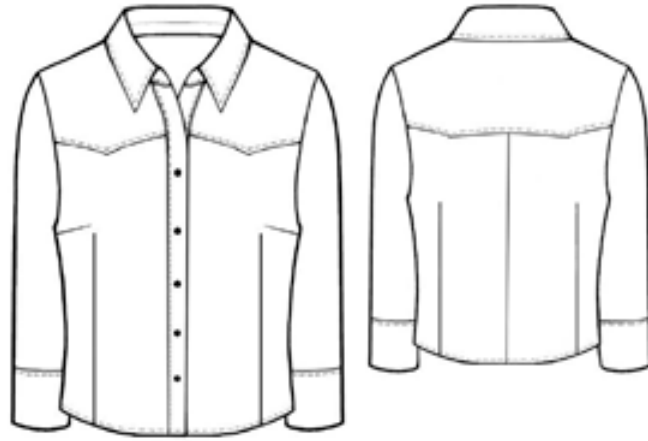
5423



5424



5425

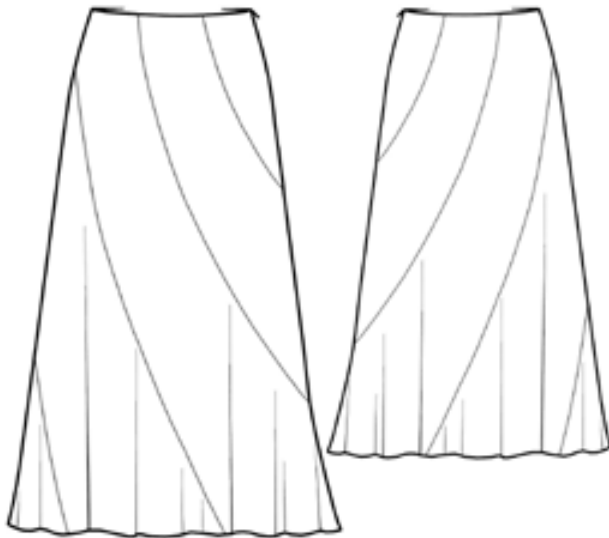


5426

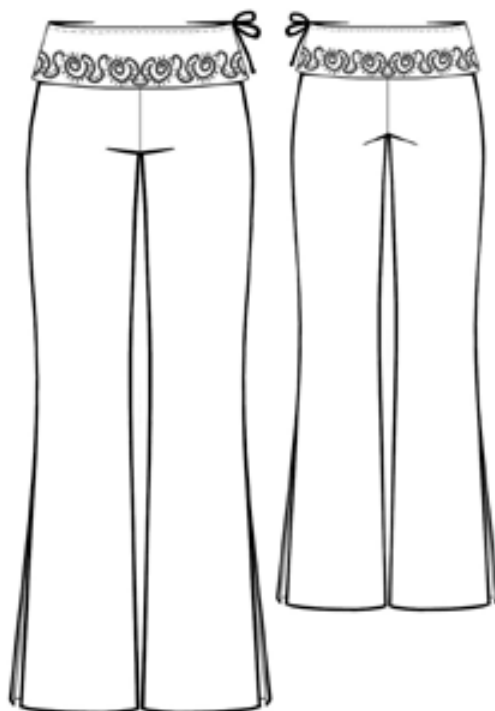




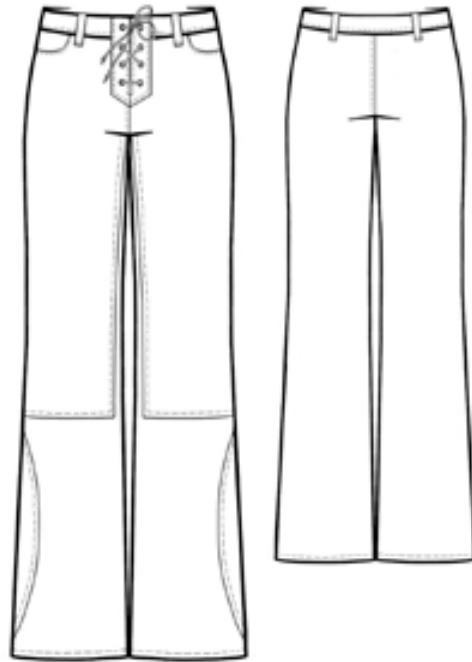
5427



5428



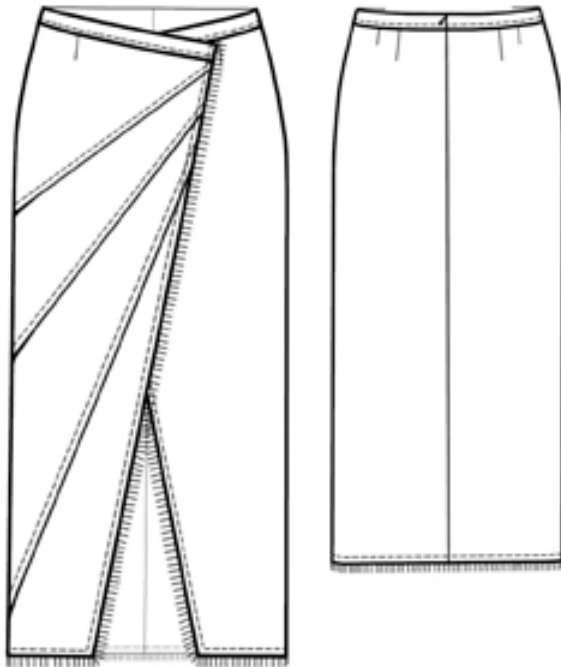
5429



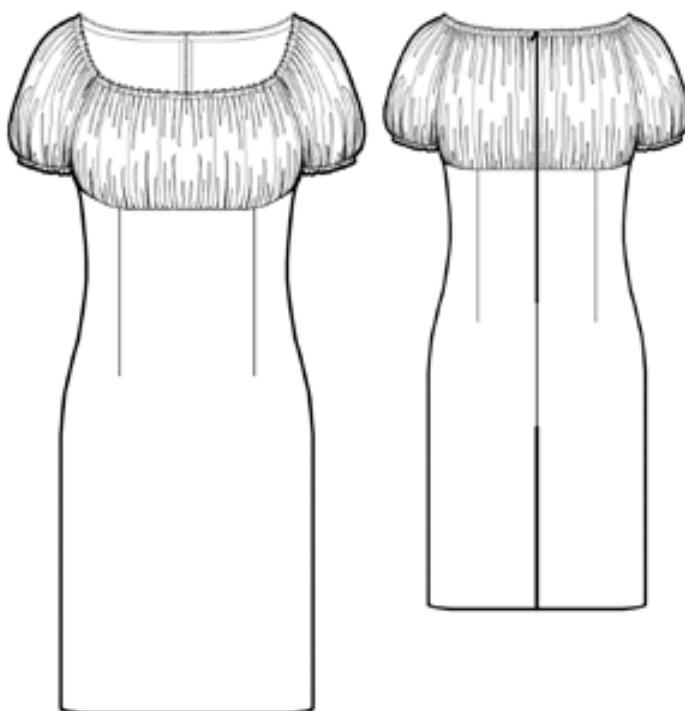
5430



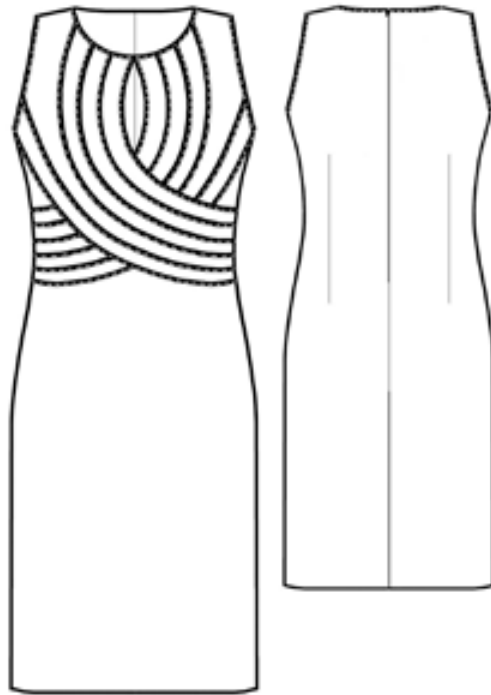
5431



5432



5433



5434

