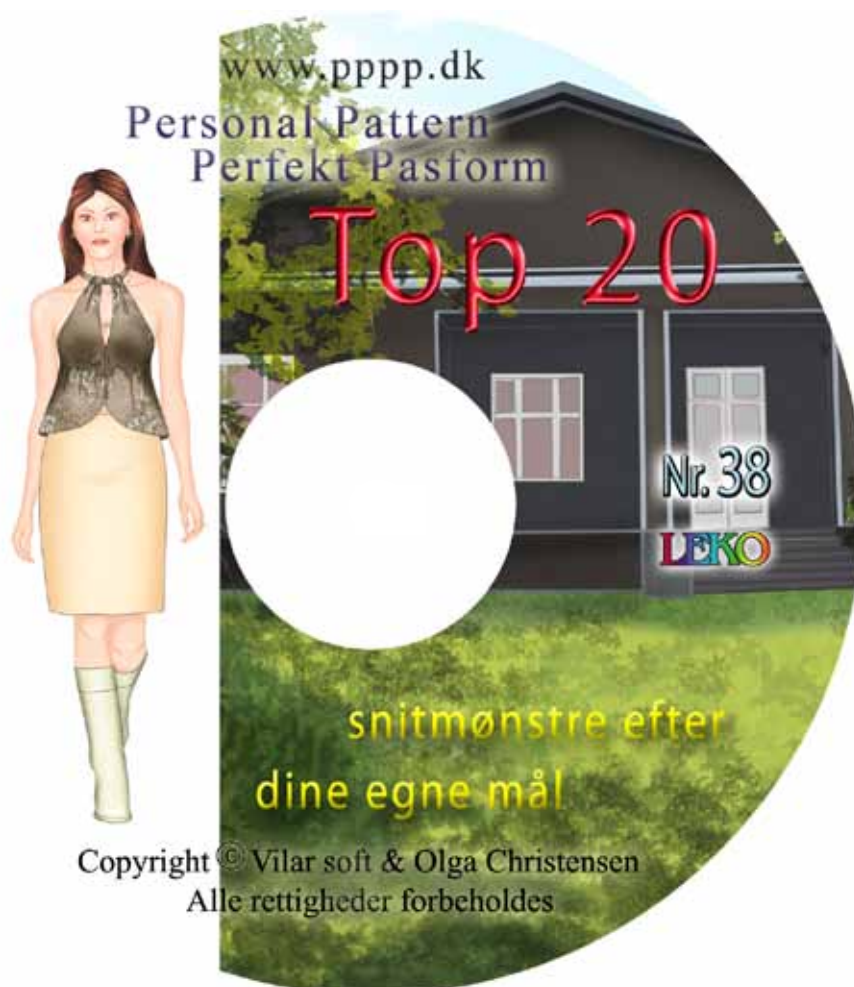


# CD 38

## Top 20



20 modeller.

Beskrivelser af arbejdsgang på dansk.

Toppe

## Personal Pattern — Perfekt Pasform

*Et skridt foran i modesyning*

For flere informationer og nyheder klik ind på

[www.pppp.dk](http://www.pppp.dk)

### CD SNITMØNSTRE — SÅ NEMT ER DET:

- Sæt cd'en i computeren — programmet starter op af sig selv
- Indtast personlige mål:
  - I højde
  - II brystvidde
  - III taljevidde
  - IV hoftevidde
- Vælg model
- Print snitmønstret ud fra din egen printer
- Sæt arkene sammen
- Klip og sy

God fornøjelse

*Olga Christensen*

5618



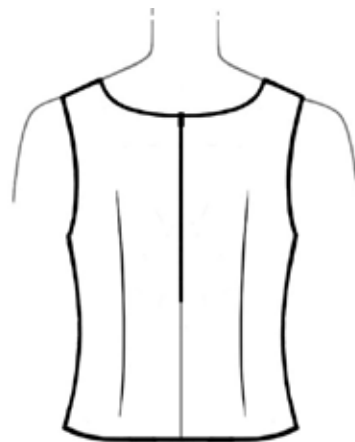
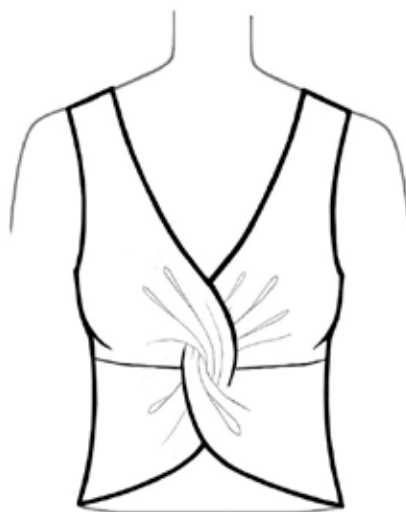
5619



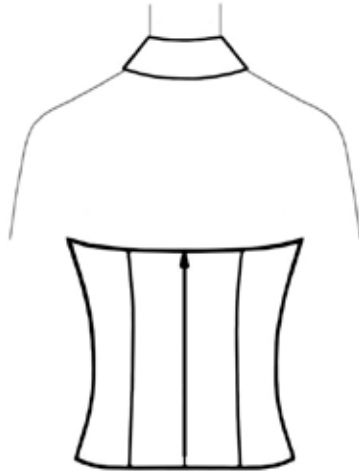
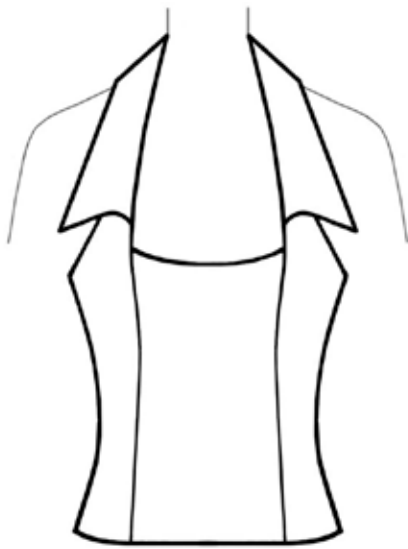
5620



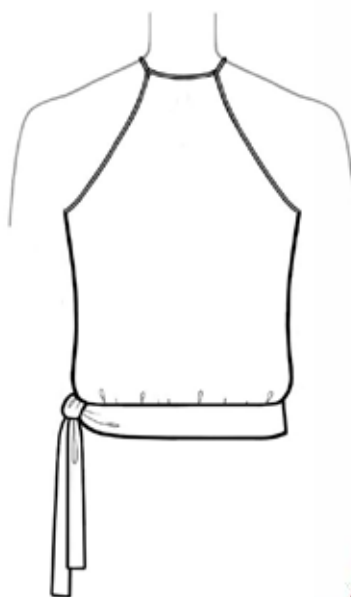
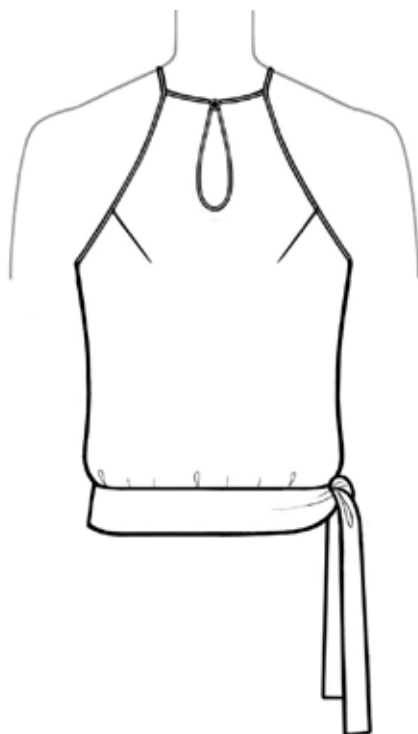
5621



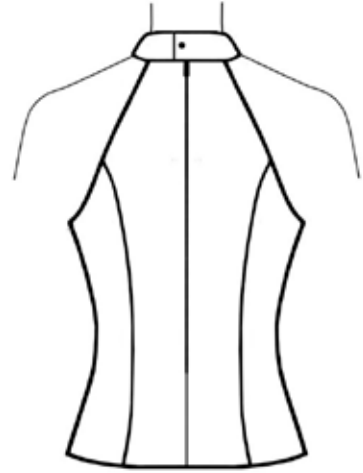
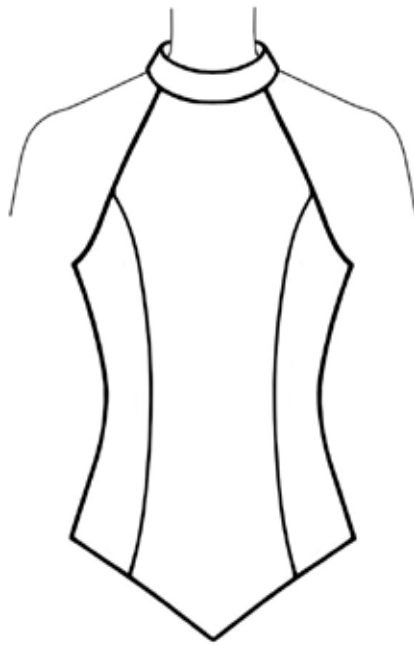
5622



5623



5624

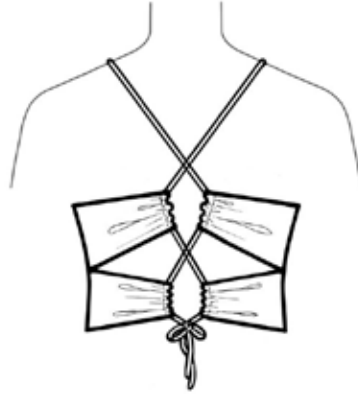
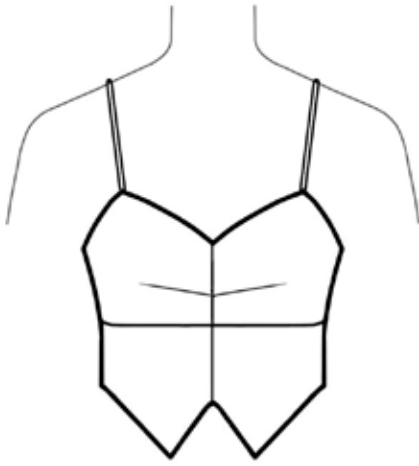


5625

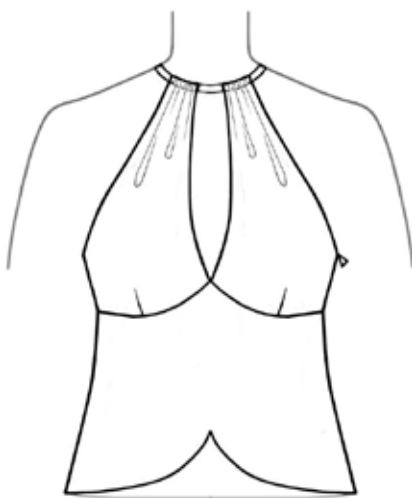




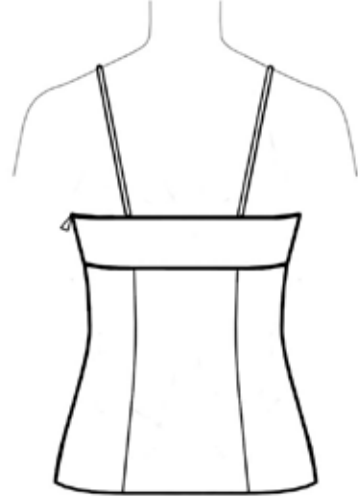
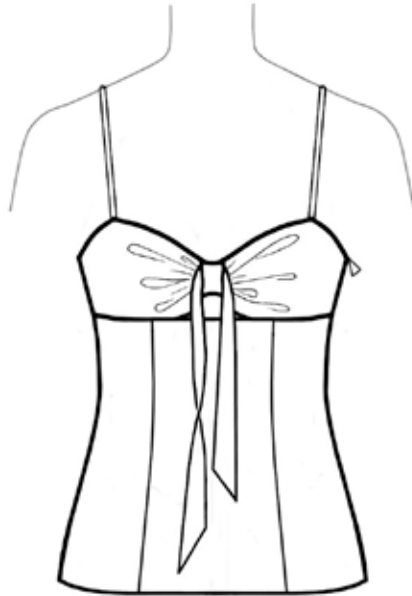
5626



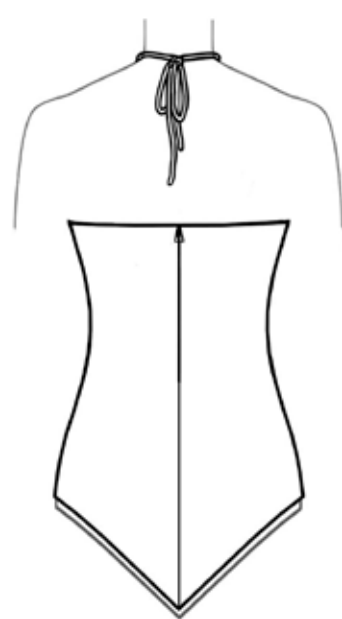
5627



5628

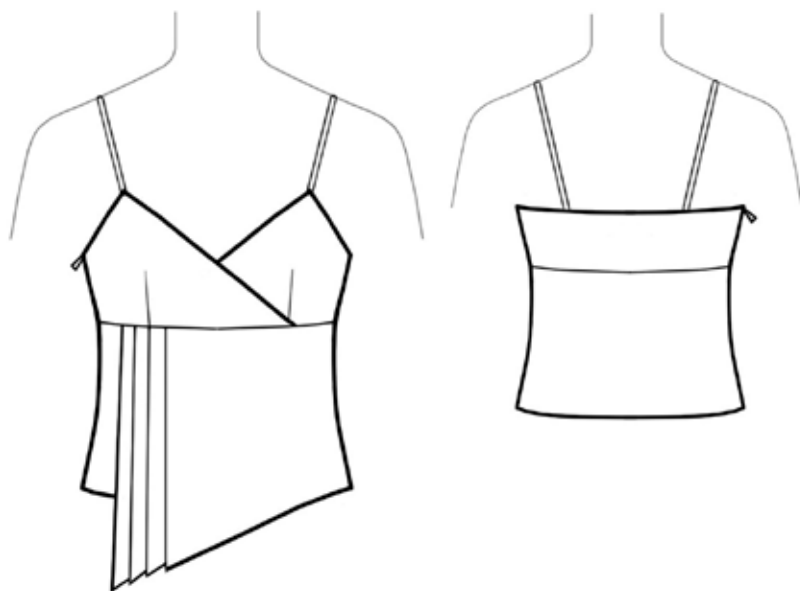


5629

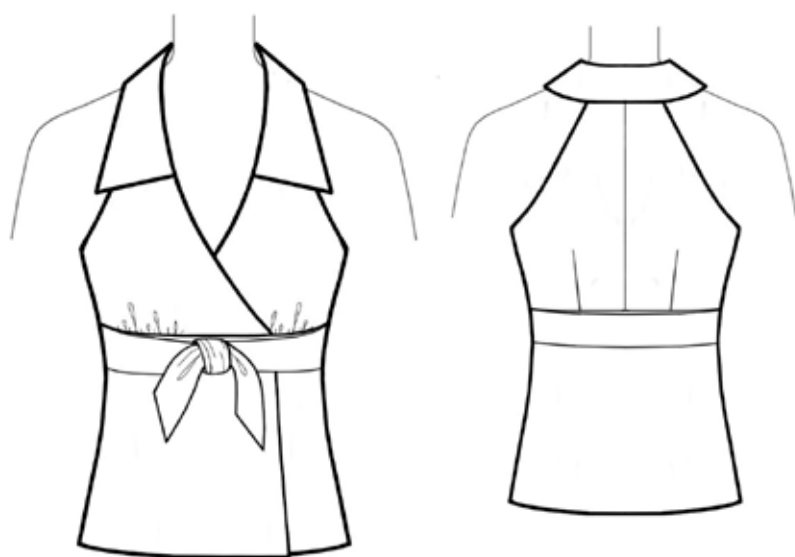




5630



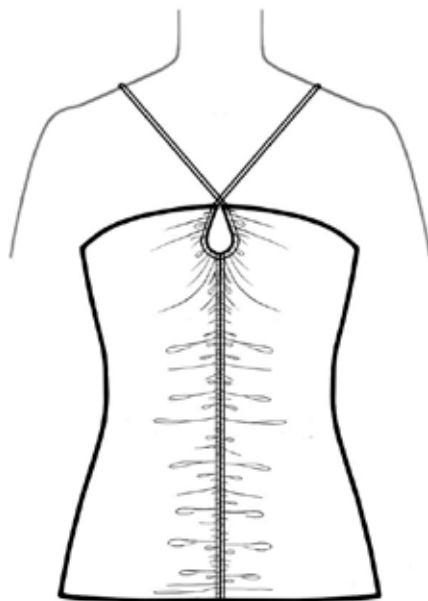
5631



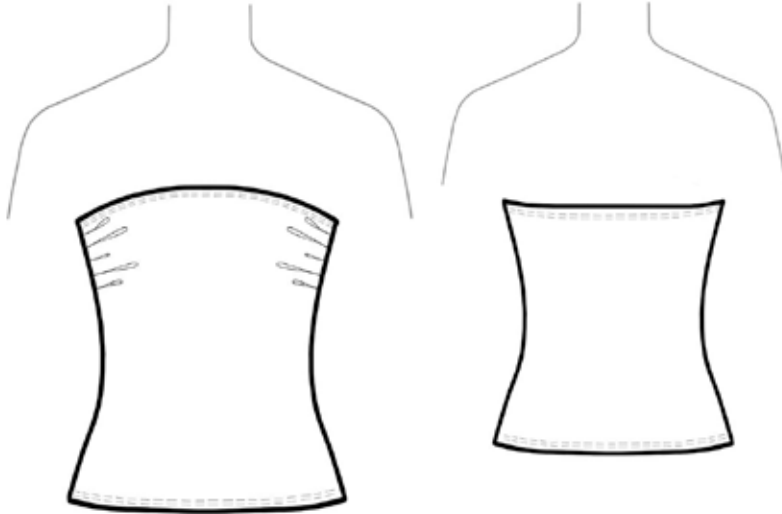
5632



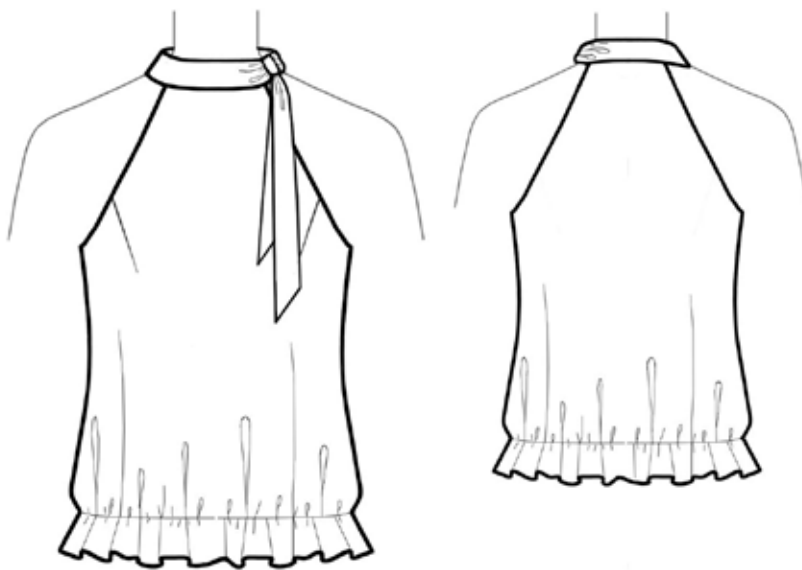
5633



5634



5635



5636



5637





