

CD 42

Sværmerier



20 modeller.

Bluser, nederdele, kjoler, toppe

Beskrivelser af arbejdsgang på dansk.

v. II - personal patterns med flere faciliteter

Personal Pattern — Perfekt Pasform

Et skridt foran i modesyning

For flere informationer og nyheder klik ind på

www.pppp.dk

v. II med flere faciliteter:

*Udskrivning af alle mønsterdelene på en gang
Tilrettelæggelse af mønsterdelene på stof
Beregning af stofforbrug*

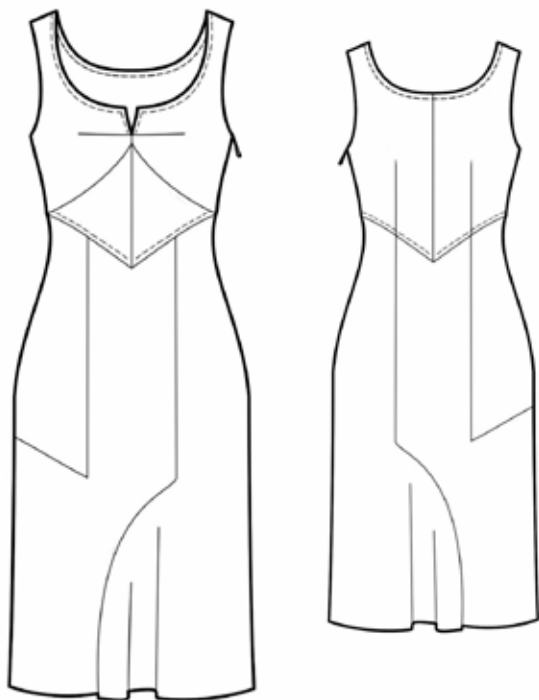
CD SNITMØNSTRE — SÅ NEMT ER DET:

- Sæt cd'en i computeren — programmet starter op af sig selv
- Indtast personlige mål:
 - I højde
 - II brystvidde
 - III taljevidde
 - IV hoftevidde
- Vælg model
- Print snitmønstret ud fra din egen printer
- Sæt arkene sammen
- Klip og sy

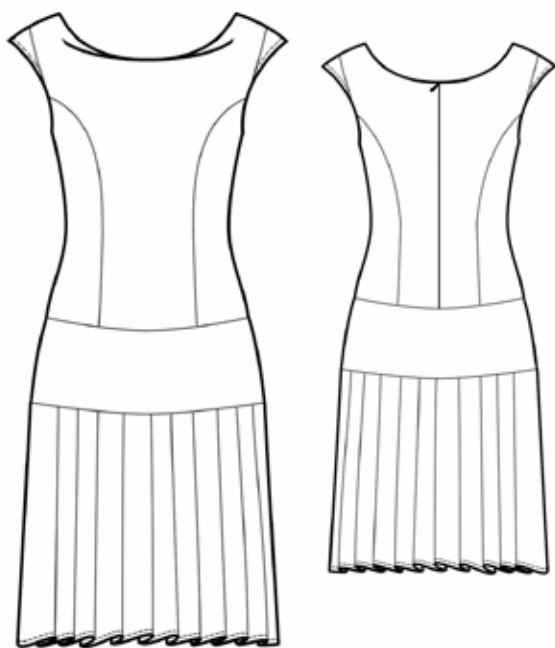
God fornøjelse

Olga Christensen

5678

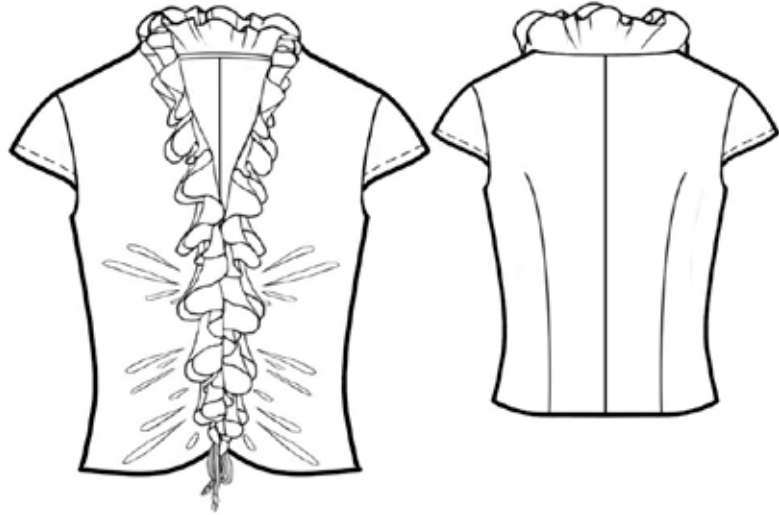


5679

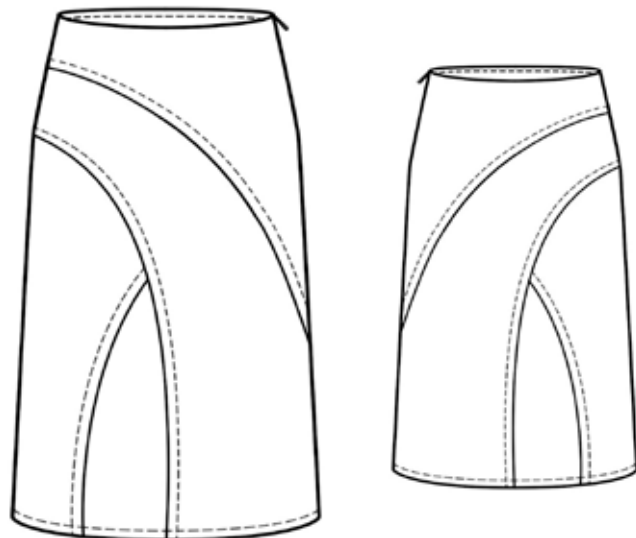




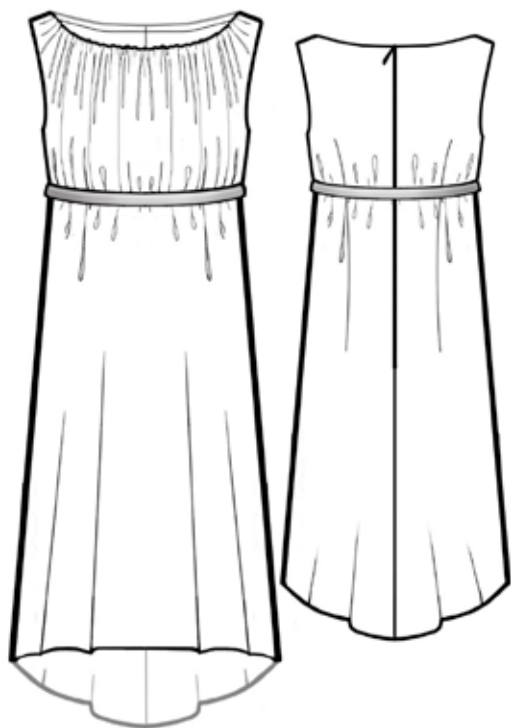
5680



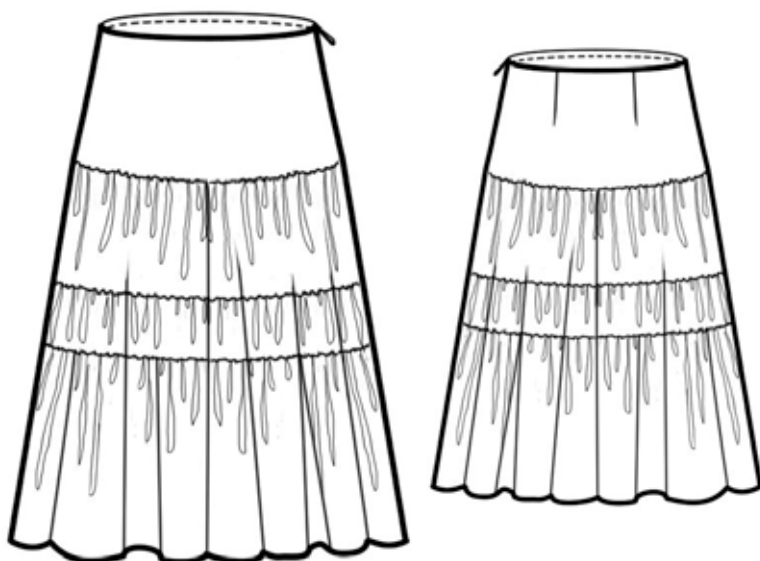
5681



5682



5683

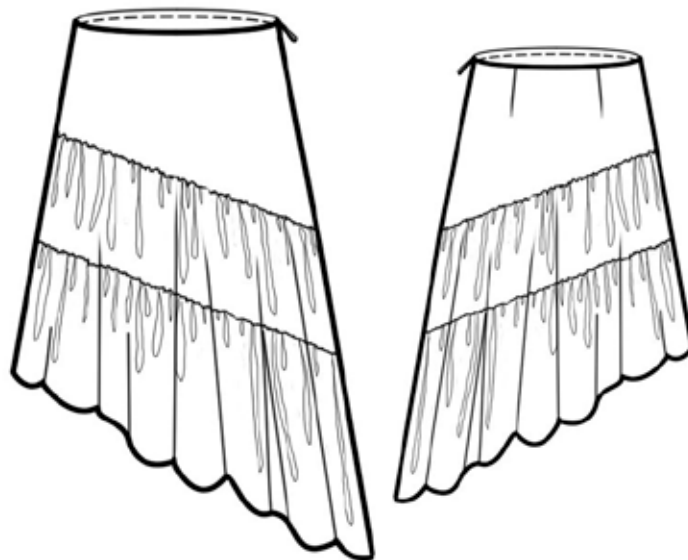




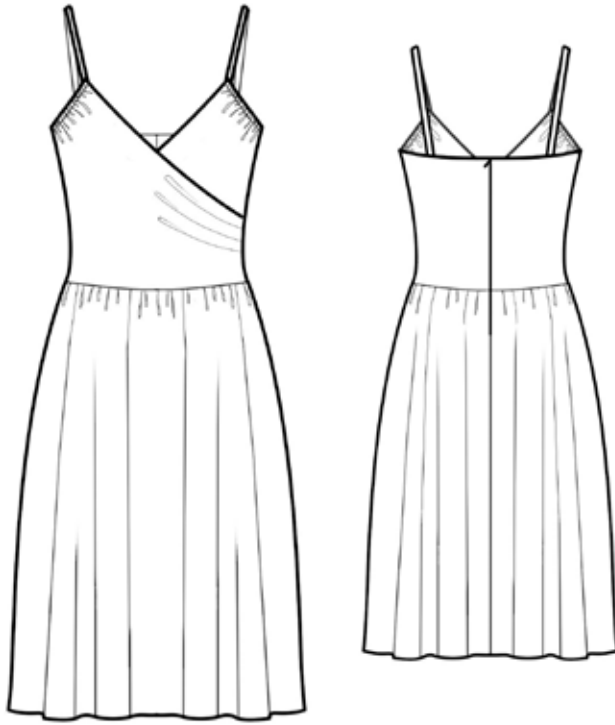
5684



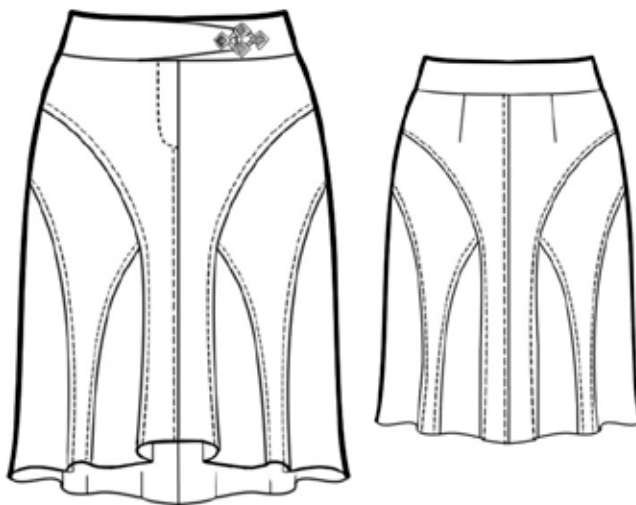
5685



5686

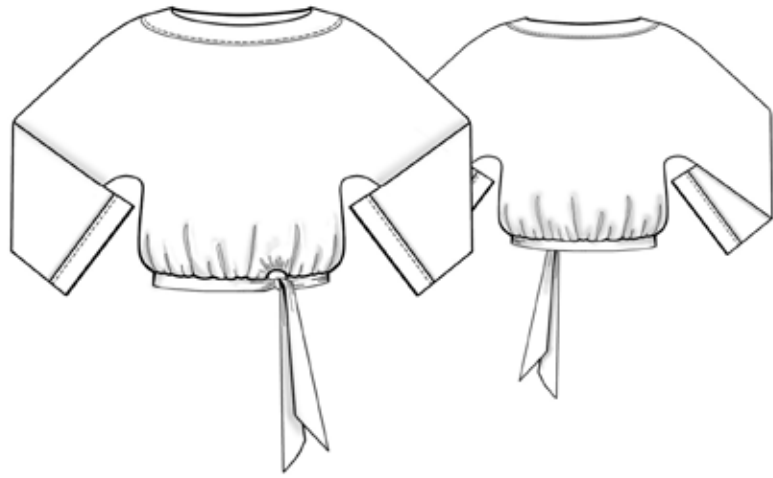


5687

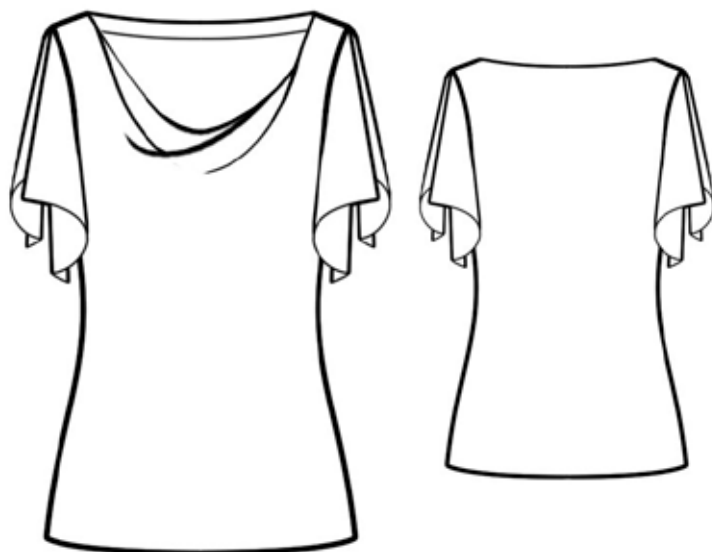




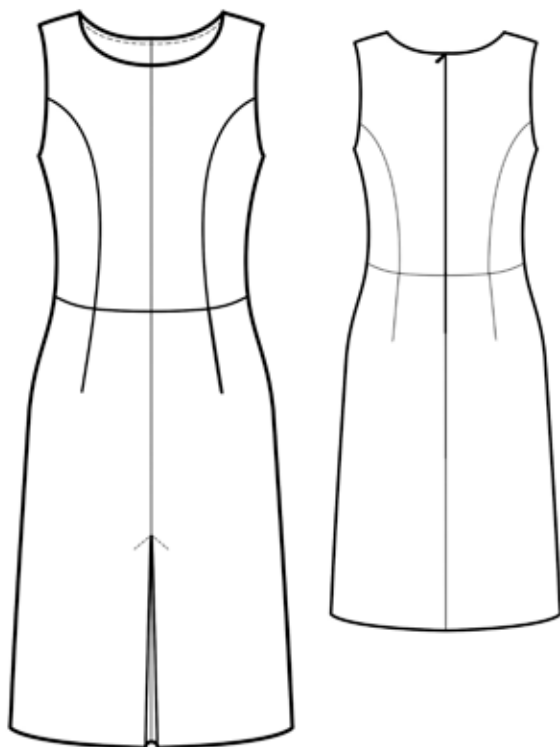
5688



5689



5690

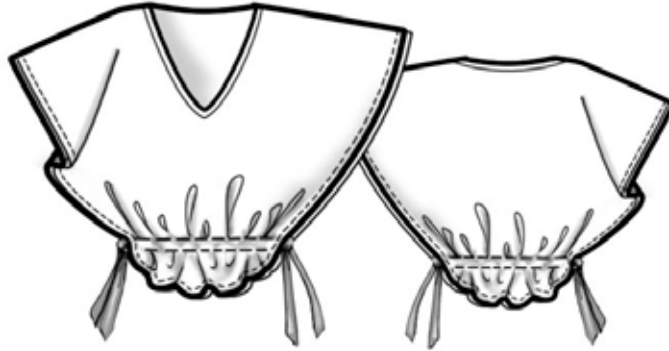


5691

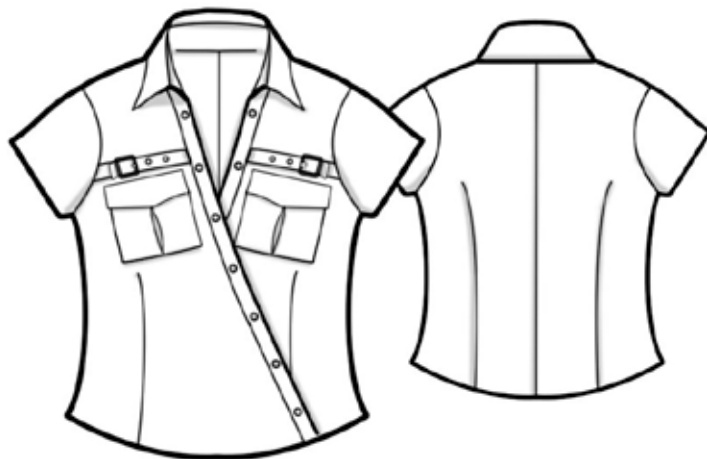




5692



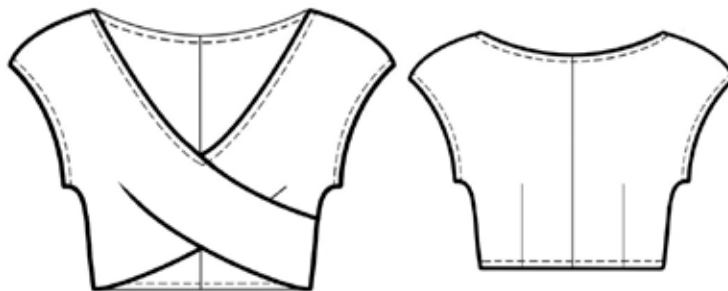
5693



5694

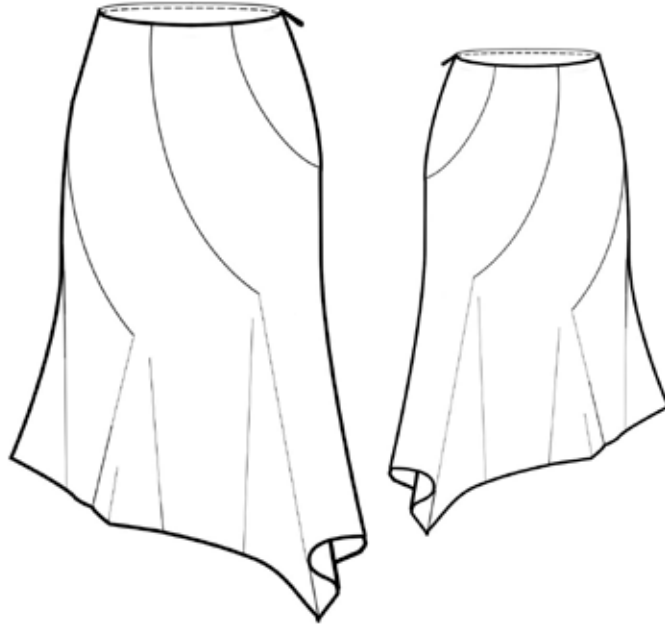


5695





5696



5697

