

CD 49

Romantik in the city



20 modeller

Bluser

Beskrivelser af arbejdsgang på dansk

v. II - personal patterns med flere faciliteter

Personal Pattern — Perfekt Pasform

Et skridt foran i modesyning

For flere informationer og nyheder klik ind på

www.pppp.dk

v. II med flere faciliteter:

*Udskrivning af alle mønsterdelene på en gang
Tilrettelæggelse af mønsterdelene på stof
Beregning af stofforbrug*

CD SNITMØNSTRE — SÅ NEMT ER DET:

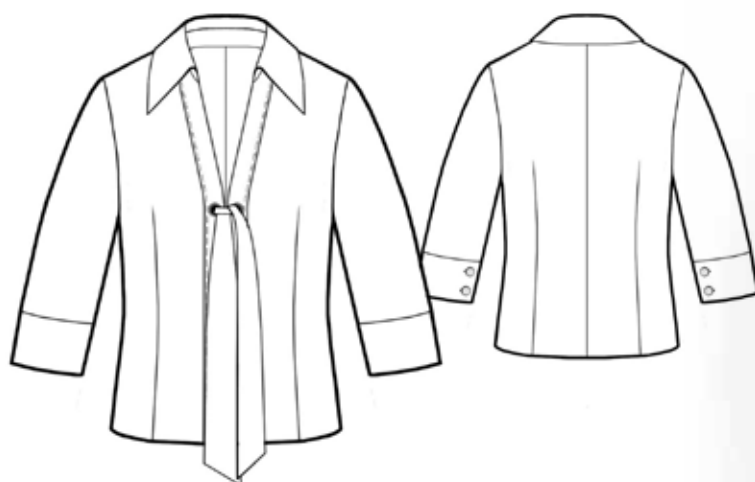
- Sæt cd'en i computeren — programmet starter op af sig selv
- Indtast personlige mål:
 - I højde
 - II brystvidde
 - III taljevidde
 - IV hoftevidde
- Vælg model
- Print snitmønstret ud fra din egen printer
- Sæt arkene sammen
- Klip og sy

God fornøjelse
Olga Christensen

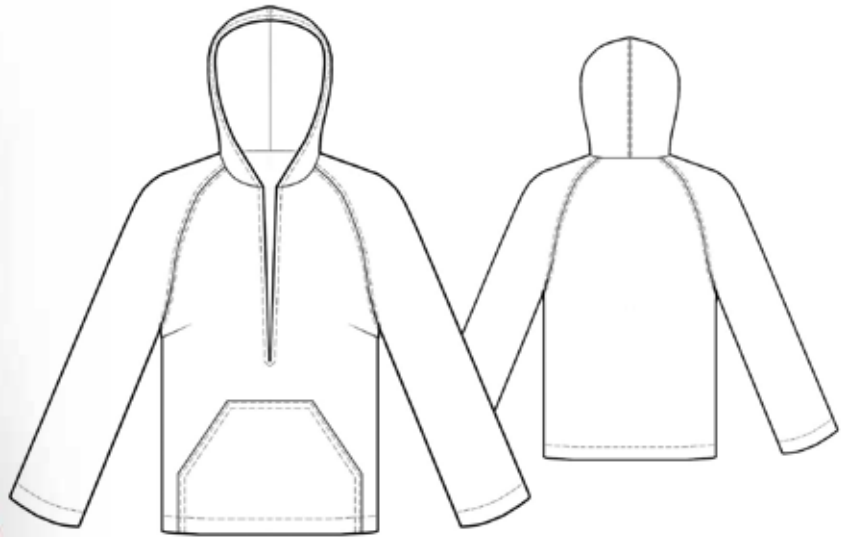
5753



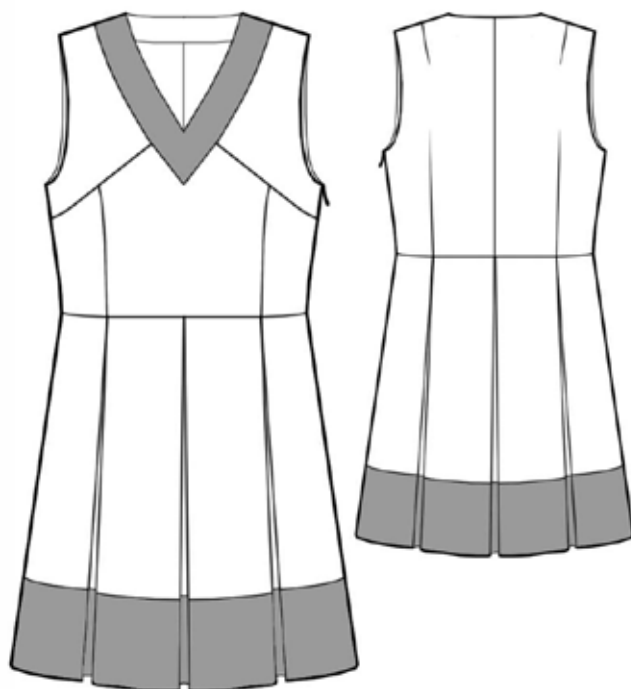
5754



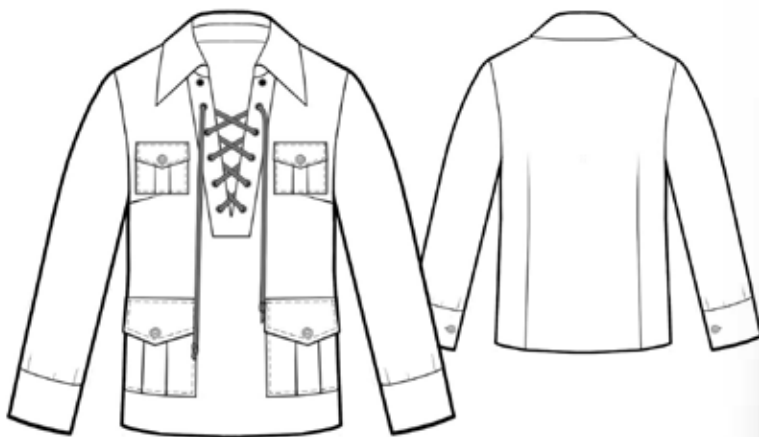
5755



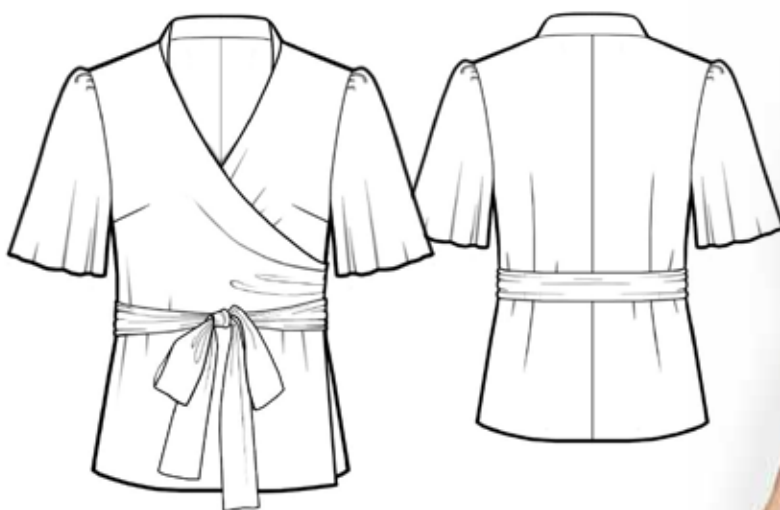
5756



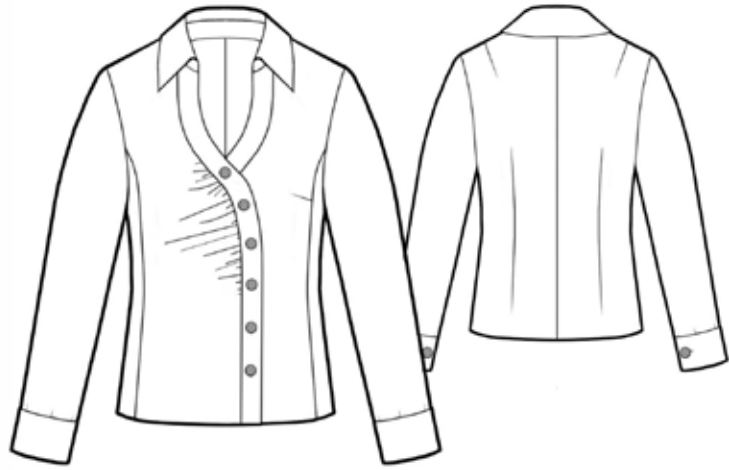
5757



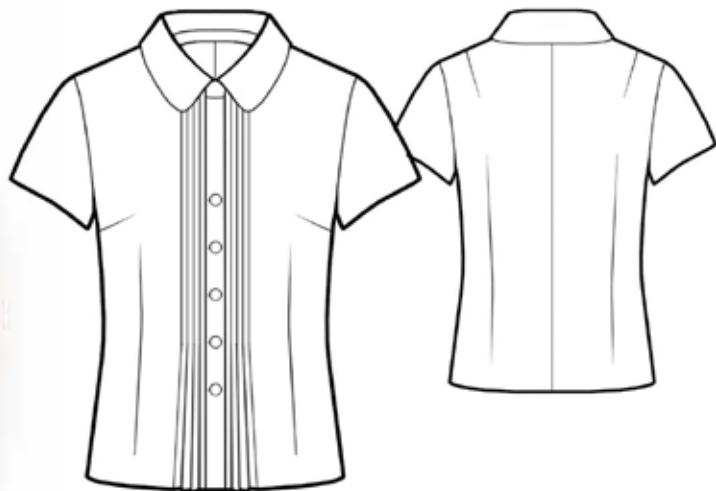
5758



5759



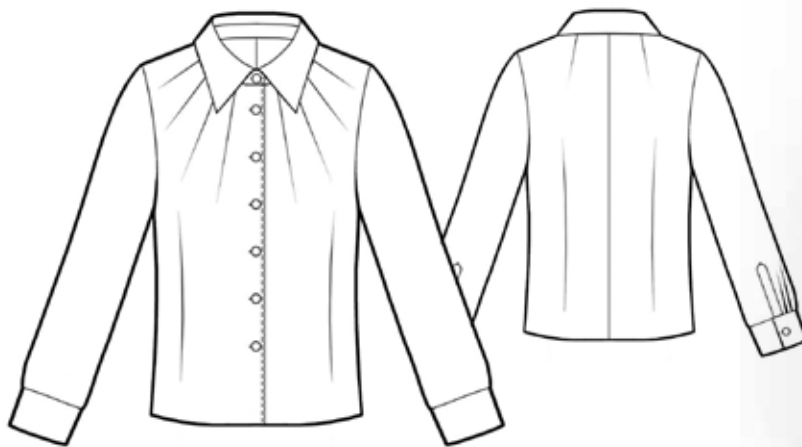
5760



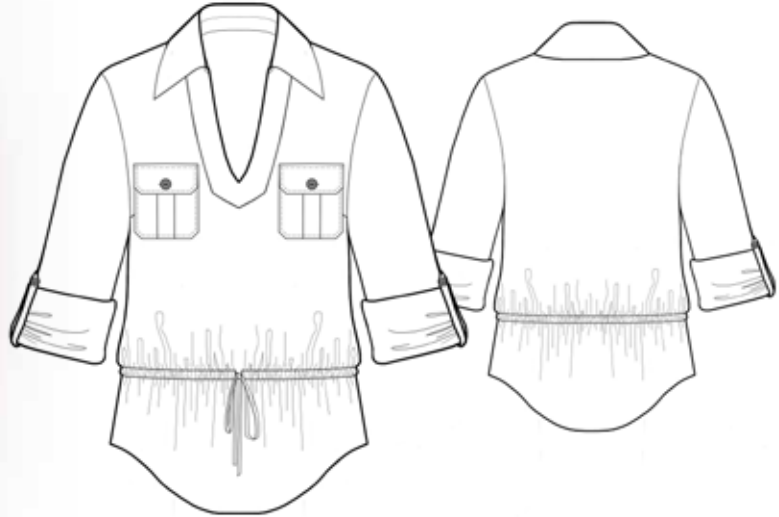
5761



5762



5763



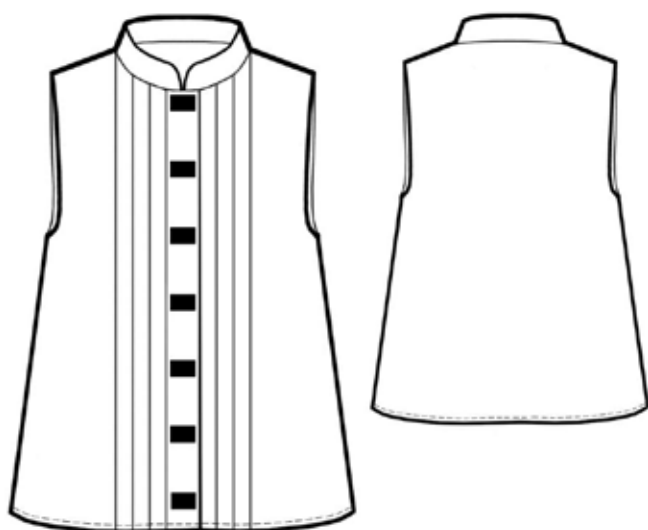
5764



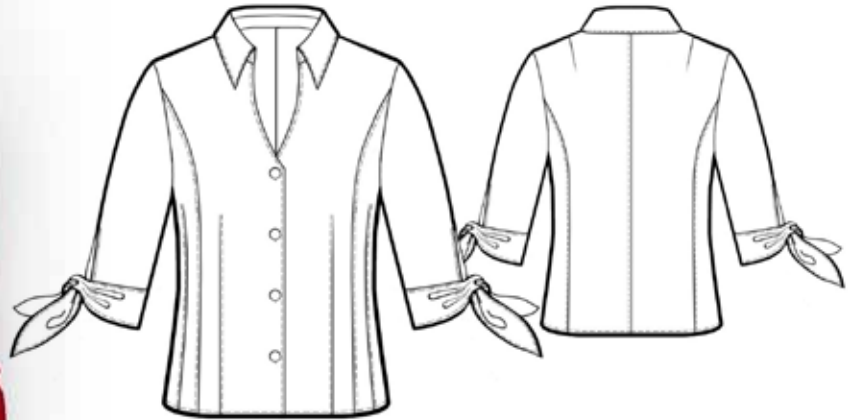
5765



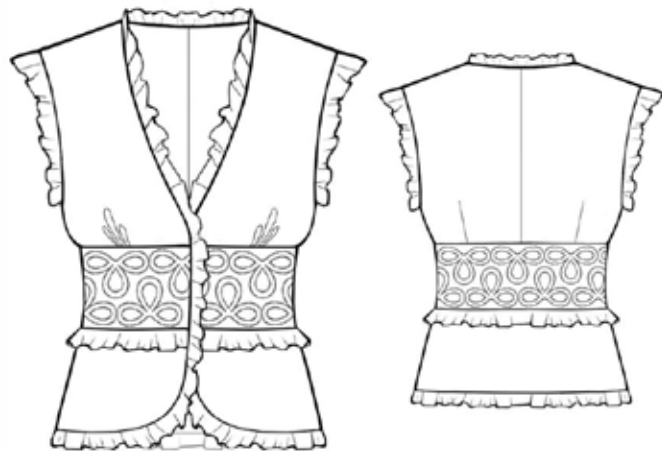
5766



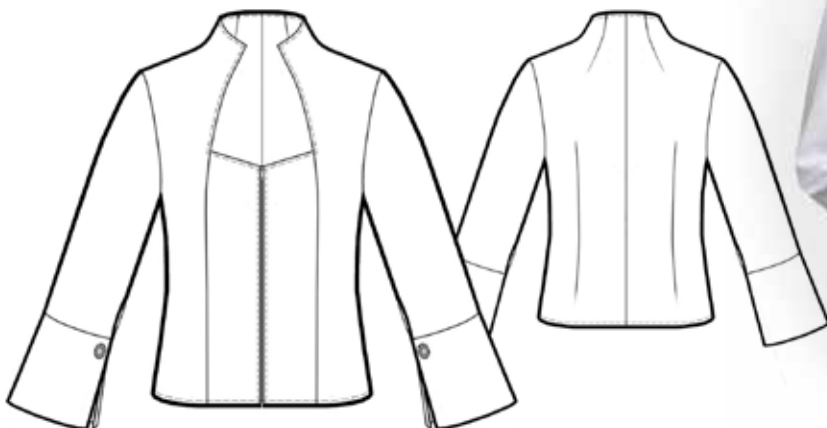
5767



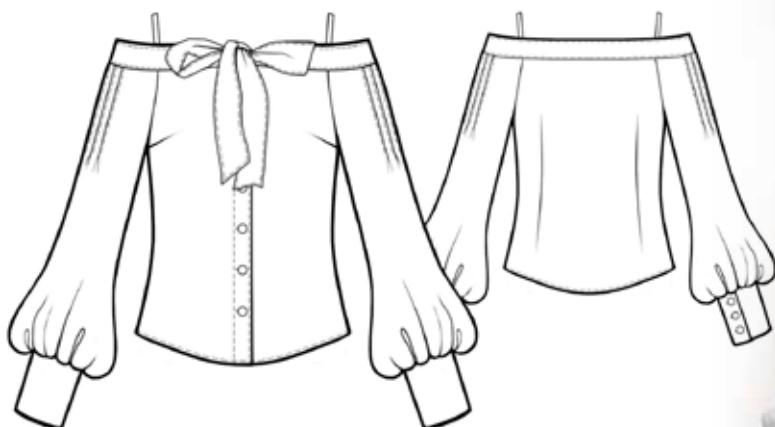
5768



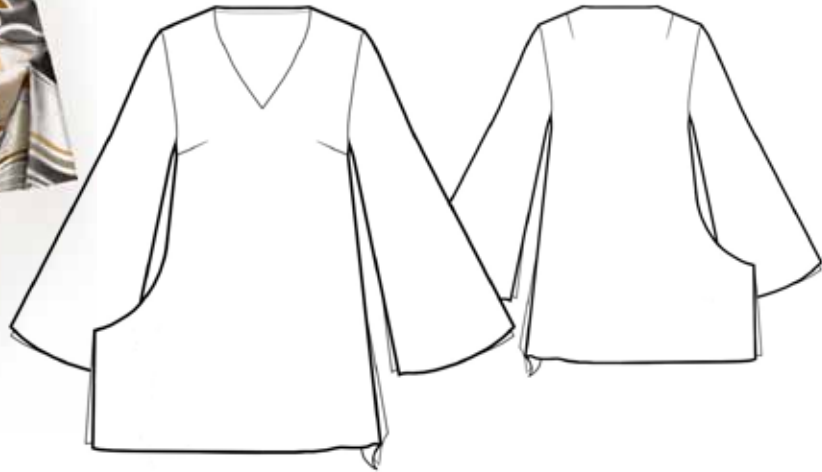
5769



5770



5771



5772

