

If the pattern has a double line around it, the seam allowances are included.

Note: By default, seam allowances are NOT included (single line) and will need to be added when laying out and cutting details.

Seam Allowance: 1 cm on all seams; hem guidelines are printed on pattern.

Important! Please print all the paper patterns and lay them out at the width of fabric you plan to use (usually from 90 to 150 cm) to see how much fabric you will need.

Don't forget to take into account pieces to be duplicated or cut on a fold. When sewing the garment, pay attention to notches. They must match up with corresponding pieces.

2084 Asymmetric skirt

Recommendations on fabric: thin natural/mixed suiting fabrics.

You will also need: fusible interfacing; 1 dress zipper.

CUTTING:

The word, "beam" used on some patterns means "straight of grain". Some pieces will be cut on the fold, this is noted on the pattern piece. Mark all notches and other design features such as darts, pleats etc. from the pattern onto your fabric.

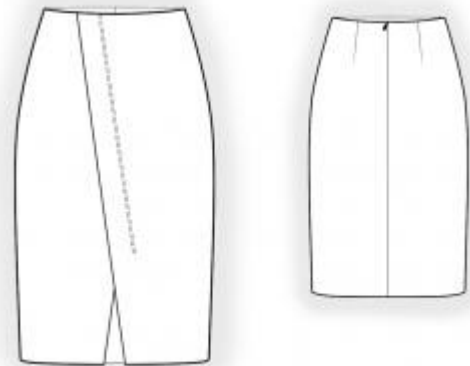
Seam allowances: all seams 1 cm. Seam allowance along lower edge of front and left skirts – 3 cm

Main fabric:

1. Back – cut 2
2. Front skirt – cut 2
3. Back facing – cut 2
4. Front facing – cut 1

Fusible interfacing:

1. Back facing – cut 2
2. Front facing – cut 1



INSTRUCTIONS:

1. Apply interfacing to facings.
2. Sew darts on Backs, press bulk towards center. Serge center back edges separately. Sew center seam from notch for zipper to hem. Press seam apart. Sew in zipper.
3. Serge slanted edge of front skirt. Fold one-piece center front facing onto right side and sew lower corner. Turn center front facing onto wrong side, press. Pin right skirt not left skirt, matching center lines, and topstitch along the marked line.
4. Sew side seams, press seam allowances towards back and serge.
5. Sew side edges of facings, press seam apart. Serge lower edge. Pin facing to garment right sides together and sew upper edge. Topstitch seam allowances onto facing at 0.2 cm from the seam. Fold facing onto wrong side, press. Fold inside center edges facings and sew to zipper tape. Slipstitch facing to side seams as well.
6. Serge lower edge of skirt, press onto wrong side and topstitch or hem as desired.

Congratulations, your skirt is ready! :)