

If the pattern has a double line around it, the seam allowances are included.

Note: By default, seam allowances are NOT included (single line) and will need to be added when laying out and cutting details.

Seam Allowance: 1 cm on all seams; hem guidelines are printed on pattern.

Important! Please print all the paper patterns and lay them out at the width of fabric you plan to use (usually from 90 to 150 cm) to see how much fabric you will need.

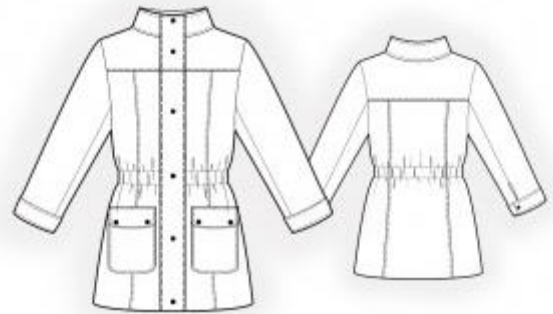
Don't forget to take into account pieces to be duplicated or cut on a fold. When sewing the garment, pay attention to notches. They must match up with corresponding pieces.

2137 Windbreaker with patch pockets

Recommendations on fabric: raincoat fabrics, natural/mixed jeans fabrics.

You will also need: 12 push buttons, cord, 2 eyelets.

CUTTING:



The word, “beam” used on some patterns means “straight of grain”. Some pieces will be cut on the fold, this is noted on the pattern piece. Mark all notches and other design features such as darts, pleats etc. from the pattern onto your fabric.

Seam allowances: all seams 1 cm; seam allowance along lower edge – 3 cm.

Main fabric:

1. Center back – cut 2
2. Side back – cut 2
3. Center front – cut 2
4. Side front – cut 2
5. Front yoke – cut 2
6. Stand collar – cut 2
7. Back yoke – cut 1
8. Upper sleeve – cut 2
9. Lower sleeve – cut 2
10. Lower part plackets – cut 2
11. Upper part plackets – cut 2

12. Cuff – cut 2
13. Casing for drawstring - cut 1
14. Flap – cut 4
15. Pocket – cut 2

INSTRUCTIONS:

1. Sew side backs to center back. Serge seams and press towards center. Sew decorative stitch at 0.5 cm from seam. Sew center back seam. Serge seam and press towards left. Sew back yoke to yoke. Serge, press towards top and topstitch at 0.5 cm from seam.
2. Sew side front to center front. Serge seams and press towards center. Sew decorative stitch at 0.5 cm from seam. Sew yoke to front. Serge, press onto yoke and sew a decorative stitch at 0.5 cm from seam.
3. Pin flaps together, right sides together and sew alongside edges and along lower edge. Trim seam allowances, turn the flap right side out and press. Serge the raw edge. Sew a decorative stitch at 0.5 cm from the edge. Serge pocket around all edges. Turn the upper edge under and topstitch. Press the side seam allowance and the lower seam allowance of the pocket onto the wrong side. Pin pocket onto front and topstitch. Sew flap to front above the pocket, fold towards bottom and topstitch. Sew a decorative stitch around all edges at 0.5 cm from the edge.
4. Sew side and shoulder seams on Shell. Serge seams and press towards back.
5. Turn under the seam allowances along the lower edges of the casing and press. Seam allowance along short edges of casing turn inside and topstitch. Topstitch casing onto the main piece from the wrong side according to markings.
6. Serge separately the edges of the back sleeve seam. Sew elbow seam on the sleeve up to notch, marking the slit. Sew front sleeve seam, serge and press towards upper piece. Fold cuff in half lengthwise, right sides together and sew corners and the protruding section. Trim seam allowances, turn right side out and press. Sew outer side of cuff to sleeve. Fold under the seam allowance of the inner side inside and stitch in the ditch. Sew a decorative stitch around all edge's cuffs at 0.5 cm from the edge. Sew sleeves into armholes.
7. Pin together stand collars right sides together and sew upper edge. Stand collar turn right side out and press. Sew outer stand collar into neckline of Shell. Fold under the seam allowance of the inner stand collar and stitch in the ditch.
8. Sew the placket seam. Press seam allowance towards top and press. Sew a decorative

stitch at 0.5 cm from seam. Fold placket in half lengthwise right sides together and sew upper and lower edges, start and stop stitching exactly at the marked line of the center front edge. Trim away corners, turn the piece right side out and press. Sew the outer edge of the placket to center front edge, press seam allowance towards the placket. Fold under the inner edge of the placket and stitch in the ditch. Sew a decorative stitch at 0.5 cm from seam.

9. Fold under the lower sleeve at 1 cm and press, then at 2 cm and topstitch.

10. Sew decorative stitch around all edges stand collars, around all edge's plackets.

11. Install push buttons on placket, on cuffs and on flaps.

12. Thread cord into casing, attach cord ends.

Congratulations, your windbreaker is ready! :)