

If the pattern has a double line around it, the seam allowances are included.

Note: By default, seam allowances are NOT included (single line) and will need to be added when laying out and cutting details.

Seam Allowance: 1 cm on all seams; hem guidelines are printed on pattern.

Important! Please print all the paper patterns and lay them out at the width of fabric you plan to use (usually from 90 to 150 cm) to see how much fabric you will need.

Don't forget to take into account pieces to be duplicated or cut on a fold. When sewing the garment, pay attention to notches. They must match up with corresponding pieces.

2222 Pants With Elastic Waistband

Recommendations on fabric: natural/mixed suiting fabrics.

You will also need: lining; fusible interfacing; elastic tape.

CUTTING:

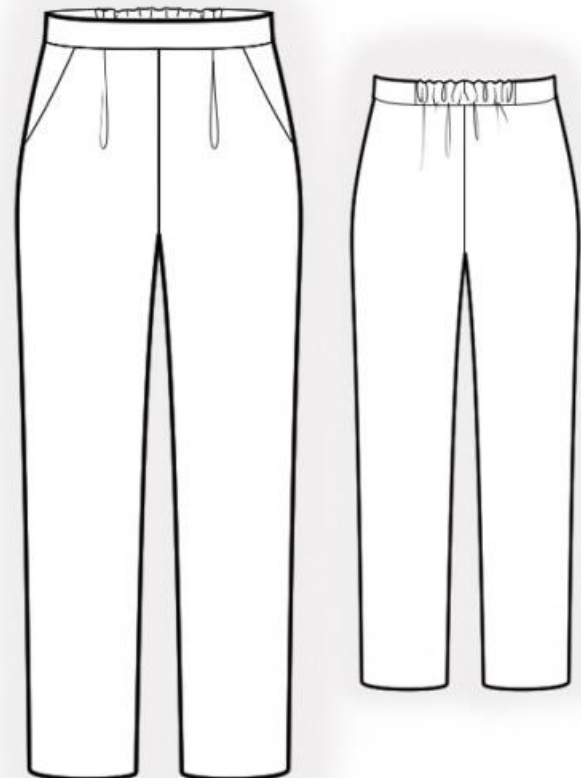
The word, "beam" used on some patterns means "straight of grain". Some pieces will be cut on the fold, this is noted on the pattern piece. Mark all notches and other design features such as darts, pleats etc. from the pattern onto your fabric.

Main fabric:

1. Back half – cut 2
2. Front half – cut 2
3. Back belt – cut 1
4. Front belt – cut 1
5. Side – cut 2
1. Pocket bag – cut 2

Fusible interfacing:

1. Back belt – cut 1
2. Front belt – cut 1



INSTRUCTIONS:

1. Apply fusible interfacing. Also apply fusible interfacing to pocket openings on front halves.
2. Pin pocket bag onto front half and sew pocket opening. Turn pocket bag onto the wrong side, topstitch seam allowances onto pocket bag at 0.1 cm and press.
3. Pin front half onto side according to markings. Sew pocket bag to side, serge. Make and baste pleats on front halves according to markings (fold bulk towards side edge). Baste pocket bag to front half along the upper and side edges.
4. Sew center seam on back halves, press towards left and serge. Sew center seam on front halves, press towards left and serge.
5. Sew side seams, seam allowances press towards back and serge. Sew the inside leg edges, seam allowances press towards back and serge.
6. Sew belts into a ring, press seam apart. Press belt in half lengthwise right side out. Mark the lines for casing on the back and topstitch along the lines. Insert elastic band into the belt, slipstitch according to markings. Sew belt to the pants, serge.
7. Serge hem of pants, press onto wrong side and topstitch or hem as desired.

Congratulations, your pants is ready! :)