

If the pattern has a double line around it, the seam allowances are included.

**Note:** By default, seam allowances are NOT included (single line) and will need to be added when laying out and cutting details.

Seam Allowance: 1 cm on all seams; hem guidelines are printed on pattern.

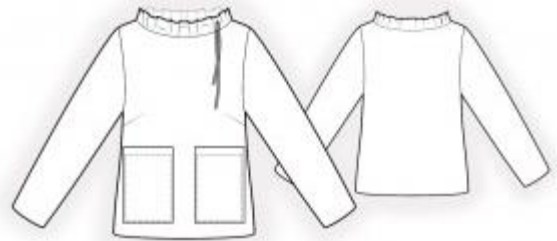
**Important!** Please print all the paper patterns and lay them out at the width of fabric you plan to use (usually from 90 to 150 cm) to see how much fabric you will need.

Don't forget to take into account pieces to be duplicated or cut on a fold. When sewing the garment, pay attention to notches. They must match up with corresponding pieces.

## 2233 Sweater with pockets

Recommendations on fabric: natural/mixed knit fabric of small stretchiness. Synthetic silk, atlas in matching colours.

You will also need : fusible interfacing; decorative cord (approximate length is given on the front pattern piece).



### CUTTING:

The word, “beam” used on some patterns means “straight of grain”. Some pieces will be cut on the fold, this is noted on the pattern piece. Mark all notches and other design features such as darts, pleats etc. from the pattern onto your fabric.

Seam allowances: all seams 1 cm; seam allowance for hem of garment and hem of sleeve – 2.0 cm. Upper seam allowance of pocket – 2 cm.

### Main fabric:

1. Back - cut 1 on fold
2. Front - cut 1 on fold
3. Sleeve - cut 2

### Silk:

1. Stand collar - cut 1
2. Pocket - cut 2

## INSTRUCTIONS:

1. Apply fusible interfacing to seam allowance along upper edge of pocket.
2. Sew darts on front, press bulk towards top.
3. Serge pocket around all edges. Fold under the seam allowance of the upper edge and topstitch. Fold inside side and lower seam allowance onto wrong side, pin onto front according to markings and topstitch.
4. Sew side and shoulder seams, press seams towards back and serge.
5. Make buttonholes on stand collar. Sew stand collar into a ring, press seam apart. Pin together stand collar in half lengthwise and press. Sew a stitch along upper edge stand collars at 1.5 cm, making a wide casing. Sew stand collar to neckline. Serge.
6. Sew sleeve seam, press seams towards back and serge. Sew sleeves into armholes matching notches and adjusting ease, serge and press.
7. Serge seam allowance for hem of garment and hem of sleeve, press onto wrong side and topstitch.
8. Thread in the cord into stand collar, slightly gathering fullness.

Congratulations, your sweater is ready! :)