

If the pattern has a double line around it, the seam allowances are included.

Note: By default, seam allowances are NOT included (single line) and will need to be added when laying out and cutting details.

Seam Allowance: 1 cm on all seams; hem guidelines are printed on pattern.

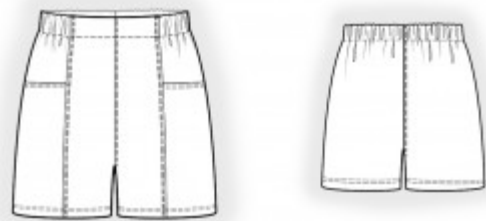
Important! Please print all the paper patterns and lay them out at the width of fabric you plan to use (usually from 90 to 150 cm) to see how much fabric you will need.

Don't forget to take into account pieces to be duplicated or cut on a fold. When sewing the garment, pay attention to notches. They must match up with corresponding pieces.

2324 Shorts with pockets and elastic waistband

Recommendations on fabric: natural/mixed denim (jeans fabric).

You will also need: lining; fusible interfacing, elastic tape, its width should equal 4 cm.



CUTTING:

The word, “beam” used on some patterns means “straight of grain”. Some pieces will be cut on the fold, this is noted on the pattern piece. Mark all notches and other design features such as darts, pleats etc. from the pattern onto your fabric.

Seam allowances: all seams 1 cm, seam allowance for hem - 3 cm.

Main fabric:

1. Center front half – cut 2
2. Side front half – cut 2
3. Side – cut 2
4. Back half – cut 2

Lining: 1. Pocket bag – cut 2

INSTRUCTIONS:

1. Apply fusible interfacing to the one-piece facings of the upper edge of center front

halves. Also apply fusible interfacing to the seam allowance of the upper edge of side front half.

2. Pin pocket bag onto front side half right sides together and sew upper edge. Turn pocket bag onto wrong side, straighten, press. Sew a double decorative stitch along the upper edge. Pin front side half onto side, sew lower edge of pocket bags, serge. Baste pieces together along the side edge and the princess seam edge.

3. Sew the princess seam between center front and side front parts, press towards center and serge. Sew a double decorative stitch along the seam.

4. Sew the inside leg edges, serge and press. Sew center seam on front halves and on back halves, press towards left and serge. Sew a double decorative stitch along the seam. Sew side seams, press seams towards back and serge.

5. Serge the edge of the one-piece facing of the upper edge. Fold the one-piece facing onto wrong side and press. Insert elastic tape and fix it at the princess seams. Topstitch facing onto the main piece.

6. Finish the seam allowance hem - fold under and press by 1 cm, then again at 2 cm and topstitch.

Congratulations, your shorts is ready! :)