

If the pattern has a double line around it, the seam allowances are included.

Note: By default, seam allowances are NOT included (single line) and will need to be added when laying out and cutting details.

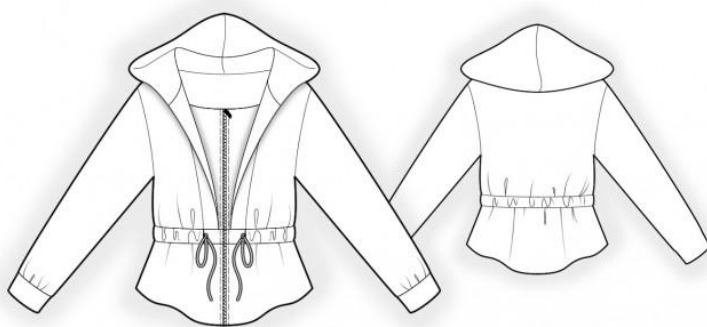
Seam Allowance: 1 cm on all seams; hem guide lines are printed on pattern

Important! Please print all the paper patterns and lay them out at the width of fabric you plan to use (usually from 90 to 150 cm) to see how much fabric you will need.

Don't forget to take into account pieces to be duplicated or cut on a fold.
When sewing the garment, pay attention to notches. They must match up with corresponding pieces.

Hoodie With Decorative Front

Recommendations on fabric: Thick natural/mixed knit fabric of small/medium stretchiness. Fleece, rib knit fabric or knit fabric of high stretchiness.



You will also need: separating zipper; decorative cord.

CUTTING:

The word, “beam” used on some patterns means “straight of grain”. Some pieces will be cut on the fold, this is noted on the pattern piece. Mark all notches and other design features such as darts, pleats etc. from the pattern onto your fabric.

Main fabric:

1. Upper back – cut 1 on fold
2. Lower back - cut 1 on fold
3. Upper front – cut 2
4. Lower front – cut 2
5. Center front – cut 2

6. Inner front – cut 2
7. Sleeve – cut 2
8. Casing for drawstring – cut 1 on fold
9. Center front facing – cut 2
10. Hood – cut 2

Rib knit fabric:

1. Cuff – cut 2

Fusible interfacing:

Apply the interfacing to the wrong side of front band facings, back neck facing, lower parts of off-set welts and half-belt. Additionally, apply interfacing to hem allowance.

INSTRUCTIONS:

1. Sew the outer side of center part to upper front. Press towards center part. Sew the longer inner seam allowance.
2. Sew the shoulder edges and the side edges of upper fronts and upper backs. Serge seams and press towards back.
3. Sew the hood seam. Serge and press towards left. Serge outer edge, fold seam allowance inside and topstitch.
4. Sew hood into neckline, wrapping it with center front. Serge and press.
5. Pin inner front to the inner edge of center front and sew. Start stitching at the top, exactly at the marked seam line of the upper edge of inner part.
6. Sew side seams of lower front and lower back. Serge seams and press towards back. Serge the shorter edges of casing, fold inside and topstitch. Pin casing onto front and back according to markings, right side down and topstitch. Fold the casing towards top and press. Baste Together upper edges and treat as one piece in the future.
7. Sew the upper part of sweatshirt to the lower part. Serge and press towards bottom.
8. Serge inner edges of front center facings. Fold away center front and pin center front facing onto the inner part of front and lower front. Sew center front facings,

inserting zipper. Sew upper edge. Clip into seam allowances in corners and fold center front facings onto wrong side. Sew a decorative stitch along the zipper. Topstitch center part and center front facing into the seam of center part.

9. Sew sleeve seam. Seam Allowance press and serge. Sew cuff into ring. Fold cuff in half lengthwise and press.

Sew cuff to sleeve, slightly stretching it. Serge seam and press. Sew sleeves into armholes, serge and press.

10. Seam allowance for hem serge, turn inside and topstitch.

11. Thread cord into casing.

Congratulations, your hoodie is ready! :)