

If the pattern has a double line around it, the seam allowances are included.

Note: By default, seam allowances are NOT included (single line) and will need to be added when laying out and cutting details.

Seam Allowance: 1 cm on all seams; hem guidelines are printed on pattern.

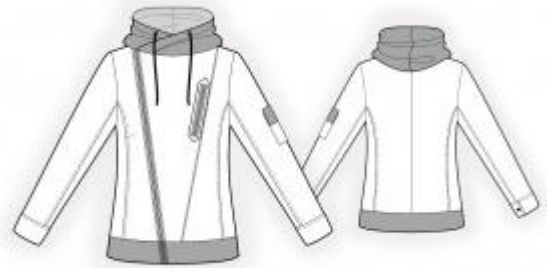
Important! Please print all the paper patterns and lay them out at the width of fabric you plan to use (usually from 90 to 150 cm) to see how much fabric you will need.

Don't forget to take into account pieces to be duplicated or cut on a fold. When sewing the garment, pay attention to notches. They must match up with corresponding pieces.

2542 Jacket with slanted fastening and hood

Recommendations on fabric: natural/mixed fabrics of dense texture (for example, denim), knit fabric of small stretchiness for decoration in contrasting or similar color.

You will also need: fusible interfacing; 1 zipper 10 cm; 1 separating zipper; 3 buttons; decorative cord; 2 grommets; 2 cord ends.



CUTTING:

The word, “beam” used on some patterns means “straight of grain”. Some pieces will be cut on the fold, this is noted on the pattern piece. Mark all notches and other design features such as darts, pleats etc. from the pattern onto your fabric.

Seam allowances: all seams 1 cm.

Main fabric:

1. Back – cut 2
2. Side – cut 2
3. Right front – cut 1
4. Center front – cut 2
5. Left front – cut 1
6. Inner front – cut 1
7. Upper sleeve – cut 2

8. Lower sleeve – cut 2
9. Cuff – cut 2
10. Right center front facing – cut 1
11. Back neck facing – cut 1
12. Facing zippers – cut 1
13. Pocket – cut 1
14. Flap – cut 1

Knit fabric:

1. Placket – cut 1 on fold
2. Left hood – cut 2
3. Right hood – cut 2
4. Flap – cut 1

Fusible interfacing:

1. Center front – cut 1
2. Right center front facing – cut 1
3. Back neck facing – cut 1
4. Cuff – cut 2
5. Facing zippers – cut 1
6. Flap – cut 1

INSTRUCTIONS:

Advice: sew knit pieces with special elastic/zig-zag stitches. If you use an overlock, cut seam allowances to 0.6-0.8 cm width. Topstitch hem allowances with double needle to save elasticity.

1. Apply fusible interfacing.
2. Sew side backs to center back, press towards center, serge. Sew a decorative stitch along the seam. Sew the center back seam, press towards left, serge. Sew a decorative stitch along the seam.
3. Sew bust dart on right front, press the bulk towards top. Sew the princess seam on the left front, press towards center, serge. Sew a decorative stitch along the seam.
4. Mark the position of the zipper on the zipper facing. Slash an opening along the marking and make slashed cuts at 1-1.5 cm from the ends of the provisioned closure. Fold seam allowances onto the wrong side, pin the zipper under the opening so that you can see the zipper's teeth and topstitch around all edges at 0.2 cm from the edge. Fold the edges of

the zipper's facing onto wrong side and topstitch them onto the left front piece according to the markings.

5. Sew the left front and the right front to the side pieces, press towards center and serge. Sew a decorative stitch along the seam. Sew shoulder seams, press towards the back, serge.

6. Apply fusible interfacing to the area of grommets on the outer hood. Sew together pieces of hood by two, press the seam apart. Install grommets on the outer hood. Pin the outer hood to the inner hood, right sides together and sew the outer edge. Clip seam allowances, turn the hood right side out, straighten, press. Topstitch hood along the marked line, making a casing. Sew hood into neckline.

7. Sew the placket to the lower edge of garment. Press the seam allowance of the inner edge of the placket onto the wrong side.

8. Left front. Serge the inner edge of the inner center front piece (further referred to as – left center front facing). Pin the left center front facing onto the center piece, right sides together, insert the left part of the zipper closure in between the pieces, wrap the zipper with the lower part of the placket, and sew with one seam. Placket turn right side out, straighten. Right front. Serge the inner edge of the right center front facing. Pin the inner front onto the right front, right sides together, insert the right side of the zipper closure in between the pieces, wrap the zipper with the lower part of the placket, and sew with one seam. Placket turn right side out, straighten. Sew the right center front facing to the inner front, press seam allowances towards center front facing. Fold the inner front piece in half lengthwise on the right sides together and sew lower edge. Turn the inner piece onto the right side, straighten, press. Topstitch the inner edge of the placket into the seam of the outer part of the placket.

9. Serge the outer edge of the back neckline facing. Sew side seams of center front facings and back neckline facings, press the seam apart. Pin center front facings onto garment right sides together (the hood is placed in between the pieces) and sew the neckline. Clip seam allowances, turn pieces right side out, straighten, press. Sew a decorative fixing stitch along the neckline.

10. Apply a strap of fusible interfacing along the upper seam allowance of pocket, press towards 1 cm onto wrong side. Fold the seam allowance of upper edge onto right side and sew side edges. Turn right side out, straighten corners. Press side and lower seam allowance onto wrong side. Topstitch seam allowance of upper edge at 2.0 cm. Topstitch the pocket onto the left upper sleeve according to the markings.

11. Pin flaps together, right sides together and sew outer edges. Trim away corners, turn

the flap right side out, straighten, press. Sew a decorative stitch line around all edges of the flap. Serge upper edge. Make a buttonhole. Sew the flap to the left upper sleeve (the lower edge is directed towards the sleeve cap), fold down and topstitch.

12. Serge the elbow edges of the sleeve separately. Sew the elbow seam of sleeve from the cap to the mark, clip into seam allowance near the notch. Press the seam allowance on the area from sleeve cap to mark and sew a decorative stitch along the seam. Press apart the seam allowances on the area from the mark down to hem and sew decorative stitch along the edges at 0.1 cm. Sew and press apart the front sleeve seam. Sew sleeves into armholes matching notches.

13. Fold cuffs in half lengthwise right sides together and sew short sides. Start and stop stitching exactly at the marked line of the cuff seam. Turn the cuff right side out, straighten and press. Sew the outer side of cuff to lower edge of sleeve, press towards cuff. Fold the seam allowance of the inner side onto the wrong side and press and topstitch into seam of.

14. Make buttonholes and sew buttons onto cuffs. Sew a button onto the pocket. Thread the cord into hood, attach cord ends.

Congratulations, your jacket is ready! :)