

If the pattern has a double line around it, the seam allowances are included.

Note: By default, seam allowances are NOT included (single line) and will need to be added when laying out and cutting details.

Seam Allowance: 1 cm on all seams; hem guidelines are printed on pattern.

Important! Please print all the paper patterns and lay them out at the width of fabric you plan to use (usually from 90 to 150 cm) to see how much fabric you will need.

Don't forget to take into account pieces to be duplicated or cut on a fold. When sewing the garment, pay attention to notches. They must match up with corresponding pieces.

2600 Blouse with diagonal closure and collar

Recommendations on fabric: natural/mixed fabrics suitable for blouses approx. 1.8 m (size 32-42), approx. 2.5 m (size 44-54) with a fabric width of 150 cm.

You will also need: fusible interfacing; 5 buttons.

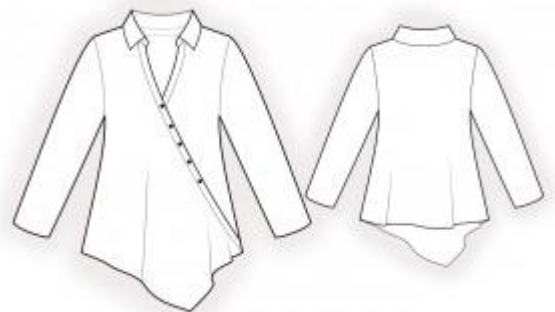
CUTTING:

The word, "beam" used on some patterns means "straight of grain". Some pieces will be cut on the fold, this is noted on the pattern piece. Mark all notches and other design features such as darts, pleats etc. from the pattern onto your fabric.

Seam allowances: Seam allowance for hem of garment and hem of sleeve – 1.5 cm; other seams – 1 cm.

Main fabric:

- . Back - cut 1 on fold
2. Front right - cut 1
3. Front left - cut 1
4. Placket right – cut 1
5. Placket left – cut 1
6. Sleeve – cut 2
7. Collar – cut 2
8. Stand collar – cut 2



Fusible interfacing:

1. Placket right — cut 1
2. Placket left — cut 1
3. Stand collar – cut 1
4. Collar – cut 1

INSTRUCTIONS:

1. Apply fusible interfacing.
2. Serge the inner edge of the left placket. Pin the left placket to the left front right sides together and sew the neckline. Clip seam allowances, turn placket onto wrong side, press. Topstitch onto the main piece along the marked line.
3. Pin the right placket to the right front right sides together and sew the neckline. Clip seam allowances, turn placket onto wrong side, press. Sew the left front to the right placket, serge, catching the loose end of the placket. Straighten the pieces, topstitch the right placket onto front, fixing the left front.
4. Sew shoulder seams, press towards the back and serge.
5. Pin upper collar to lower collar, right sides together. Sew ends of collar and collar fall. Trim seam allowances. Turn the collar right side out, straighten and press. Pin stand collars together, right sides together, insert the ready collar between them, adjust edges and sew, sewing the ends of stand collar at the same time. Start and stop sewing exactly at the marked line of seam between stand collar and garment. Turn the finished collar right side out and press. Sew upper stand collar with collar into neckline, fold raw edge of lower stand collar and stitch-in-the-ditch along seam of upper stand collar.
6. Sew sleeves into armholes, serge and press. Sew side seams, sewing the sleeve edges at the same time, press towards the back and serge.
7. Serge the hem of garment and hem of sleeve, press onto wrong side and topstitch.
8. Make buttonholes on the right placket, sew on buttons onto left front.

Congratulations, your blouse is ready! :)