

If the pattern has a double line around it, the seam allowances are included.

**Note:** By default, seam allowances are NOT included (single line) and will need to be added when laying out and cutting details.

Seam Allowance: 1 cm on all seams; hem guidelines are printed on pattern.

**Important!** Please print all the paper patterns and lay them out at the width of fabric you plan to use (usually from 90 to 150 cm) to see how much fabric you will need.

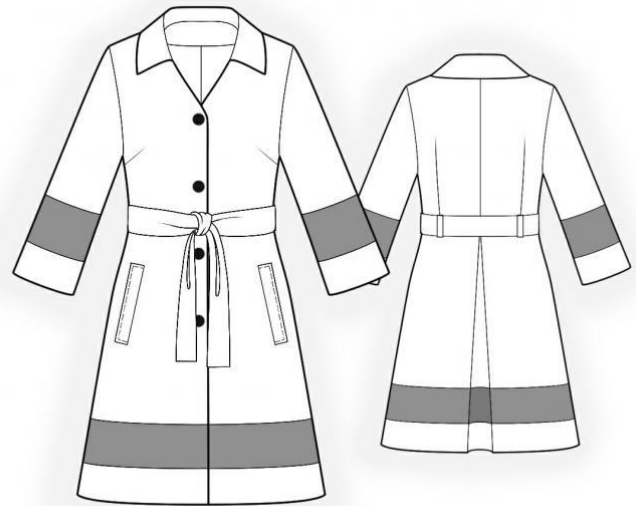
Don't forget to take into account pieces to be duplicated or cut on a fold. When sewing the garment, pay attention to notches. They must match up with corresponding pieces.

## 4170 Raincoat with contrast insets

Recommendations on fabric: whipcord  
You will also need: fusible interfacing;  
lining; shoulder pads; 4 buttons

### CUTTING:

The word, “beam” used on some patterns means “straight of grain”. Some pieces will be cut on the fold, this is noted on the pattern piece. Mark all notches and other design features such as darts, pleats etc. from the pattern onto your fabric.



### Main fabric:

1. Upper back part – 2 details
2. Lower back part – 1 folded detail
3. Lower inset of back part – 1 folded detail
4. Front part – 2 details
5. Lower inset of front part – 2 details
6. Back neckline facing – 1 detail
7. Buttonstand – 2 details
8. Upper sleeve part – 2 details
9. Lower inset of sleeve – 2 details
10. Belt – 1 detail
11. Collar – 2 details
12. Off-set welt – 2 details

### 13. Belt loop – 1 detail

#### Contrast fabric:

1. Inset of back part – 1 folded detail
2. Inset of front part – 2 details
3. Inset of sleeve – 2 details

#### Lining:

1. Bigger pocket bag – 2 details
2. Smaller pocket bag – 2 details

ATTENTION: Lining details are cut except for buttonstands and facings.

Fusible interfacing: buttonstand, back part neckline facing, off-set welt

#### INSTRUCTIONS:

1. Apply fusible interfacing to buttonstand, back neckline facing, off-set welt.
2. Fold off-set welt in half lengthwise right side out, press. Apply fusible interfacing to pocket location. Mark a line on off-set welt that determines the width of the off-set welt when ready. Topstitch smaller pocket bag on inner side of off-set welt. Lay off-set welt onto right side of front part to marking line (closer to center) right side downwards. Stitch off-set welt. Topstitch underlay piece onto bigger pocket bag, turning the long edge inside. Stitch bigger pocket bag to other marking line of pocket. Cut the pocket opening in the center between marking lines, making cross cuts to corners of pocket marking. Turn details of the pocket onto wrong side. Straighten seam allowances and press. Sew edges of pocket bags, fixing corners of the pocket.
3. Sew darts on upper back part. Press darts to center edge. Sew center edge of back part. Press the seam apart and serge. Make and fasten a counter pleat on lower back part according to markers. Stitch lower part of back part to upper part. Serge and press upwards.
4. Sew the dart on front part. Press the dart upwards. Sew side and shoulder edges. Press apart the seam and serge.
5. Sew details of contrast insets together. Press seams apart and serge. Sew details of lower insets together. Press seams apart and serge. Stitch contrast insets to main details. Press seams onto contrast inset and serge. Stitch lower insets to main garment. Press seams onto contrast inset and serge. Press pleats.

6. Fold details of collar right sides together and overstitch along outer edge. Turn collar onto right side and press. Sew collar into the neckline.
7. Sew details of sleeve. Serge seams and press onto contrast inset. Sew, serge and press sleeve seam. Sew sleeve into armhole, easing in the sleeve on top of rounded part and aligning notches. Sew in shoulder pads.
8. Sew shoulder seams of back part neckline facing and buttonstands, press seam allowances apart.
9. Sew details of lining the same way as main fabric details. Turn seam allowance of lining hem twice at 1 cm and stitch. Stitch lining to buttonstands and back part facing. Press seam allowances onto lining and serge.
10. Press and serge hem. Lay buttonstand onto right side of front part right side downwards, pin together and overstitch along buttonstand and back part neckline. Stitch lower edges of buttonstands to front part exactly along hem marked line. Cut seams of lower corners of buttonstand. Turn the coat onto right side, straighten seams. Put decorative stitch at 0.7 cm off the edge of buttonstand and of collar.
11. Stitch lining to hem of sleeves. Turn the coat onto right side.
12. Serge buttonholes on right front part, on sew buttons on left front part.
13. Fold detail of the belt in half lengthwise right sides together and overstitch along contour, leaving a slit in the center of 10-15 cm long to turn the garment out. Turn belt onto right side, turn seam allowances of unsewn section inside and put decorative stitch at 0.7 cm off the edge along the perimeter of the belt.
14. Serge one longitudinal edge on belt loop detail. Press unserged edge inwards, closing from above with the serged edge. Put double stitch, fixing longitudinal allowances together. Cut the belt loop into 2 parts. Stitch the belt loop on back part near side seam. Run the belt.

Congratulations, your coat is ready! :)