

If the pattern has a double line around it, the seam allowances are included.

**Note:** By default, seam allowances are NOT included (single line) and will need to be added when laying out and cutting details.

Seam Allowance: 1 cm on all seams; hem guide lines are printed on pattern

**Important!** Please print all the paper patterns and lay them out at the width of fabric you plan to use (usually from 90 to 150 cm) to see how much fabric you will need.

Don't forget to take into account pieces to be duplicated or cut on a fold.

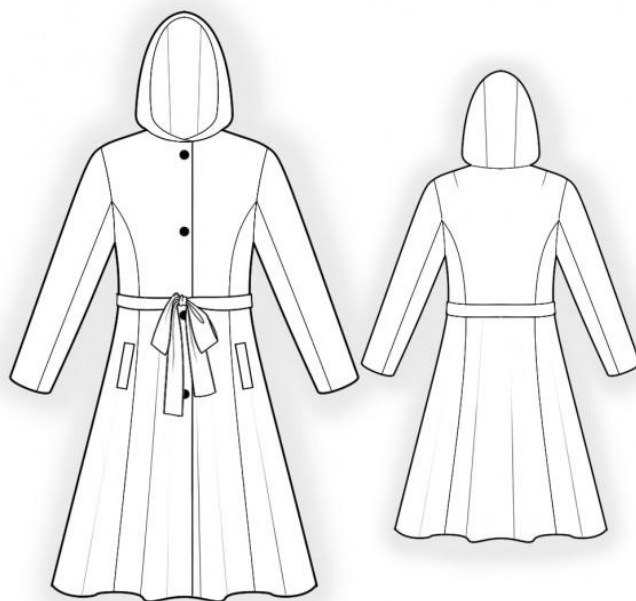
When sewing the garment, pay attention to notches. They must match up with corresponding pieces.

## 4796 Long A-line Coat With Hood

Recommendations on fabric:  
natural/mixed fabric suitable for coats.  
You will also need: lining; shoulder pads; sleeve heads; fusible interfacing; 4 buttons.

### CUTTING:

The word, "beam" used on some patterns means "straight of grain". Some pieces will be cut on the fold, this is noted on the pattern piece. Mark all notches and other design features such as darts, pleats etc. from the pattern onto your fabric.



### Main fabric:

1. Center back – cut 1
2. Side back – cut 2
3. Center front – cut 2
4. Side front – cut 2
5. Upper sleeve – cut 2

6. Lower sleeve – cut 2
7. Hood – cut 2
8. Center hood – cut 1
9. Hood facing – cut 1
10. Center front facing – cut 2
11. Back neck facing – cut 1
12. Off-set welt – cut 2
13. Underlay piece – cut 2
14. Belt – cut 1

Lining:

1. Center back – cut 1
2. Side back – cut 2
3. Center front – cut 2
4. Side front – cut 2
5. Upper sleeve – cut 2
6. Lower sleeve – cut 2
7. Hood – cut 2
8. Center hood – cut 1
9. Large pocket bag – cut 2
10. Small pocket bag – cut 2

Fusible interfacing:

1. Center front – cut 2
2. Center front facing – cut 2
3. Hood facing – cut 1
4. Back neck facing – cut 1
5. Off-set welt – cut 2

Also apply fusible interfacing to armholes on back and front, pocket entrance, hem of garment and hem of sleeve.

**Attention!** Lining is cut using pattern blocks for self fabric, except for the width of center front facing and back neckline facing and facings of hood.

INSTRUCTIONS:

1. Apply fusible interfacing.

2. Sew shoulder darts on center back, press bulk towards center. Sew side backs to center back, press seam apart.
3. Sew side fronts to front, press seam apart.
4. Press welt in half lengthwise wrong sides together. Topstitch small pocket bag onto the inner side of the welt. Sew welt to front along lower marked line of pocket. Topstitch underlay piece onto bigger pocket bag, folding long edge under. Sew a large pocket bag to the front along the upper marked line of the pocket. Stop stitching near short marking lines of the pocket. Slash through pocket opening. Snip diagonally toward the end of stitching at 1-1.5 cm from the end of pocket opening. Turn the welt and large pocket bag onto the wrong side through the resulting opening. Sew a double back stitch line near corners to fix ends of pockets. Sew and serge edges of pocket bags.
5. Sew shoulder and side seams, press seam apart.
6. Sew side hoods to center hood, press seam apart. Sew hood into neckline, clip seam allowances, press apart.
7. Sew shoulder seams of buttonstands and facings, press seam apart.
8. Sew side hoods cut from lining to center hood, press seam apart. Sew hood facing to hood lining, press towards facing. Sew hood into neckline of center front facings and neckline facing, clip into curves, press apart.
9. Serge and press seam allowance along them onto the wrong side. Place the center front facing onto the front right sides together. Pin together center front facing and self garment and sew along center front and hood. Sew lower edge of buttonstand to front exactly according to the marked line of hem, stepping back from inner size of buttonstand at 1.5 cm. Turn button stands (center front edges) right side out onto right side, straighten seams. Baste together the seam allowances along the neckline of the hood close to the seam.
10. Sew the elbow seam of the sleeve and press it apart. Press seam allowance on the lower edge onto the wrong side. Sew and press apart the front sleeve seam. Sew a line with short stitches along the upper edge of the sleeve cap. Gather fullness and press

gathered ease. Sew sleeves into armholes matching notches and adjusting ease. Sew shoulder pads and sleeve heads to garment.

11. Sew darts and seams on lining, sew in sleeves. Serge, fold inside and topstitch the lower edge of the lining. Sew lining to inner edges of button stands and to back neckline facing. Sew lining to hem of sleeve.

12. Fold the belt in half lengthwise right sides together and sew around all edges, leaving an opening for turning. Seam Allowances trim away corners, turn belt right side out. Sew the opening closed.

Congratulations, your coat is ready! :)