

If the pattern has a double line around it, the seam allowances are included.

Note: By default, seam allowances are NOT included (single line) and will need to be added when laying out and cutting details.

Seam Allowance: 1 cm on all seams; hem guidelines are printed on pattern.

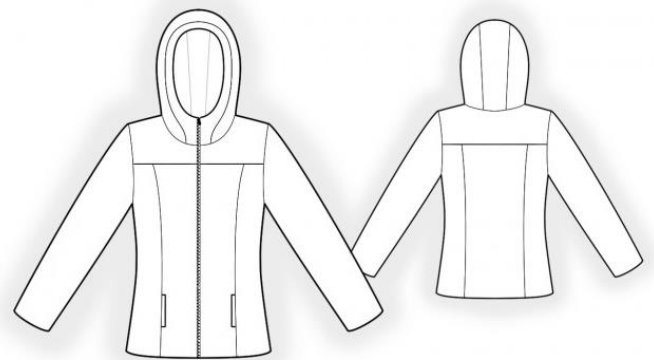
Important! Please print all the paper patterns and lay them out at the width of fabric you plan to use (usually from 90 to 150 cm) to see how much fabric you will need.

Don't forget to take into account pieces to be duplicated or cut on a fold. When sewing the garment, pay attention to notches. They must match up with corresponding pieces.

4814 Outdoor Jacket

Recommendations on fabric: natural/mixed fabrics suitable for outdoor jackets, knit fabric of small stretchiness.

You will also need: separating zipper, lining.



CUTTING:

The word, “beam” used on some patterns means “straight of grain”. Some pieces will be cut on the fold, this is noted on the pattern piece. Mark all notches and other design features such as darts, pleats etc. from the pattern onto your fabric.

Seam allowances: Seam allowance for hem of garment and hem of sleeve — 3 cm, along lower edge of pockets — 0 cm, all other seams 1 cm.

Main fabric (knit fabric):

1. Center back – cut 2
2. Side back – cut 2
3. Side front – cut 2
4. Sleeve – cut 2
5. Hood — cut 2
6. Center hood – cut 1
7. Pocket bag large — cut 2
8. Pocket bag small - cut 2

Main fabric 1(waterproof):

1. Center front – cut 2
2. Center front facing – cut 2
3. Back yoke – cut 1
4. Front yoke – cut 2
5. Hood facing – cut 1
6. Back neck facing - cut 1

Lining:

1. Center back – cut 2
2. Side back – cut 2
3. Side front – cut 2
4. Sleeve – cut 2
5. Hood – cut 2
6. Center hood – cut 1
8. Center front – cut 2
9. Back yoke – cut 1
10. Front yoke – cut 2

INSTRUCTIONS:

1. Pin smaller pocket bag onto right side of center part and sew pocket opening. Trim away corners. Fold pocket bag onto wrong side and press. Pin center part onto larger lining and sew seam allowances of pocket bags. Sew side front to front. Serge seams and press towards center. Sew yoke to front. Serge and press towards top.
2. Sew side backs to center back. Press towards center. Sew yoke to back. Press seam allowance towards top.
3. Sew shoulder seams. Press seams towards back. Sew sleeve into armhole. Sew side seam, and continue sewing the sleeve seam.
4. Sew center part to hood. Pin facing onto hood and baste together along outer edge. Fold inside seam allowance along inner edge, onto wrong side and topstitch at hood from the right side. Sew hood into neckline.
5. Sew shoulder seam of back neckline facing and center front facing. Sew hood lining into neckline of facings.
6. Pin self to center front facings right sides together, insert zipper between the pieces and

sew center front edge and outer edge of hood. Fold center front facings onto wrong side. Baste together seam allowances of the hood seam.

7. Sew lining, leaving an opening in left side seam. Sew in sleeves. Sew lining to facing, center front facings, to hem of jacket and sleeves. Turn right side out through the opening. Sew the opening closed.

Congratulations, your jacket is ready! :)