

If the pattern has a double line around it, the seam allowances are included.

**Note:** By default, seam allowances are NOT included (single line) and will need to be added when laying out and cutting details.

Seam Allowance: 1 cm on all seams; hem guidelines are printed on pattern.

**Important!** Please print all the paper patterns and lay them out at the width of fabric you plan to use (usually from 90 to 150 cm) to see how much fabric you will need.

Don't forget to take into account pieces to be duplicated or cut on a fold. When sewing the garment, pay attention to notches. They must match up with corresponding pieces.

### 4966 Raincoat with hood.

Recommendations on fabric: natural/mixed fabrics suitable for raincoats.

You will also need: lining, fusible interfacing, separating zipper, decorative cord; 2 grommets, 2 cord end caps, 4 buttons.

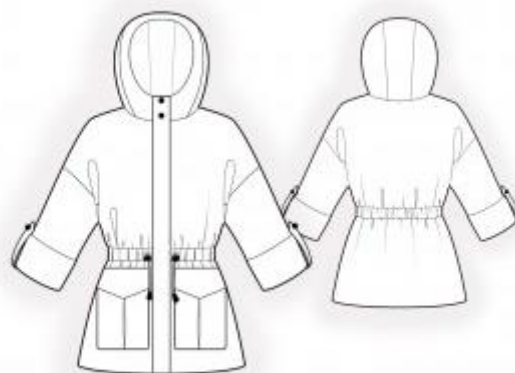
#### CUTTING:

The word, "beam" used on some patterns means "straight of grain". Some pieces will be cut on the fold, this is noted on the pattern piece. Mark all notches and other design features such as darts, pleats etc. from the pattern onto your fabric.

Seam allowances: all seams 1 cm. Seam allowance for hem of garment and for upper edge of pocket – 3 cm.

#### Main fabric:

1. Back – cut 1 on fold
2. Front – cut 2
3. Sleeve – cut 2
4. Back neck facing – cut 1
5. Center front facing – cut 2
6. Placket – cut 2
7. Hood – cut 2
8. Center hood – cut 1
9. Hood facing – cut 2
10. Pocket – cut 2
11. Flap – cut 4



12. Cuff – cut 2
13. Decorative Tab – cut 2
14. Casing – cut 1 on fold

Fusible interfacing:

1. Placket – cut 2
2. Center front facing – cut 2
3. Back neck facing – cut 1
4. Flap – cut 2
5. Hood facing – cut 1
6. Cuff – cut 2

Lining:

1. Back – cut 2
2. Front – cut 2
3. Sleeve – cut 2
4. Hood – cut 2
5. Center hood – cut 1

INSTRUCTIONS:

1. Apply fusible interfacing.
2. Make and baste a box pleat on pocket. Fold under the upper seam allowance of pocket at 1 cm, then at 2 cm and topstitch. Fold the underside and lower edges of pocket and press. Pin pockets onto fronts according to markings and topstitch. Pin together flaps right sides together and sew outer edges. Clip into curves, turn flaps right side out, straighten, press. Sew a decorative stitch on flap at 0.5 cm from the edge. Serge upper edge. Sew flaps to fronts (the corner is directed towards neckline), fold down and topstitch.
3. Sew shoulder seams, press the seam apart.
4. Sew sleeves to garment, press seam allowances towards sleeve. Sew the side seams, sewing the sleeve edges at the same time, press towards the back.
5. Install grommets on Front according to markings. Fold under and press all seam allowances of casing onto the wrong side. Pin casing onto garment, wrong sides together and topstitch.
6. Sew side hoods to center hood, press seam allowances towards center part. Sew facing to hood, press the seam allowances towards the facing.
7. Sew hood into neckline, press the seam apart.
8. Fold the left placket in half lengthwise right sides together and sew shorter edges. Turn the right side out, straighten, press. Pin the left part of zipper onto the center front edge and the edge of the

hood (teeth are directed away from the edge), pin left placket onto it, and sew. Pin the right part of zipper onto the center front edge and the edge of the hood (teeth are directed away from the edge) and sew.

9. Sew shoulder edges of center front facings and back neckline facing, press the seam apart. Sew hood from lining, press seams onto center part. Sew facing to lining of hood, press the seam allowances towards the facing. Sew hood into neckline of center front facings, press the seam apart.

10. Pin center front facings and hood to Shell right sides together and sew around the outer edge of center front facings and hood. Clip into curves, trim away corners. Turn the center front facings onto wrong side, straighten, press. Baste together seam allowances of the hood seam.

11. Sew cuff into a ring, press the seam apart. Fold cuff in half lengthwise and press right side out. Sew cuff to lower edge of sleeve.

12. Fold decorative tab in half, right sides together, and sew longer edge and corner. Trim seam allowances, turn tab right side out, press and sew a decorative stitch at 0.1 cm from the edge. Sew decorative tab to inner cuff according to markings.

13. Sew lining, leaving an opening in left side seam. Sew lining to facing, center front facings, to hem of jacket. Turn the garment right side out through the opening. Sew lining to hem of sleeve through the opening, press seam. Sew the opening closed. Sew a decorative/fixing stitch along hem of jacket at 2 cm from the edge.

14. Fold the right front placket half lengthwise, right sides together, and sew corners. Turn right side out and press. Sew decorative stitches along the outer fold, along upper and lower edge. Serge inner edge. Pin placket onto front (the edge of placket is directed away from center front edge) and topstitch along the marked line. Fold the placket, covering the closure and topstitch along the seam.

15. Make buttonholes on the right placket and on decorative tabs. Sew on buttons correspondingly. Thread cord into casing, attach cord ends.

Congratulations, your raincoat is ready! :)