

If the pattern has a double line around it, the seam allowances are included.

Note: By default, seam allowances are NOT included (single line) and will need to be added when laying out and cutting details.

Seam Allowance: 1 cm on all seams; hem guidelines are printed on pattern.

Important! Please print all the paper patterns and lay them out at the width of fabric you plan to use (usually from 90 to 150 cm) to see how much fabric you will need.

Don't forget to take into account pieces to be duplicated or cut on a fold. When sewing the garment, pay attention to notches. They must match up with corresponding pieces.

5591 Long dress with chiffon sleeves

Recommendations on fabric: natural/mixed fabrics; chiffon

You will also need: concealed zip; piping; fusible interfacing.

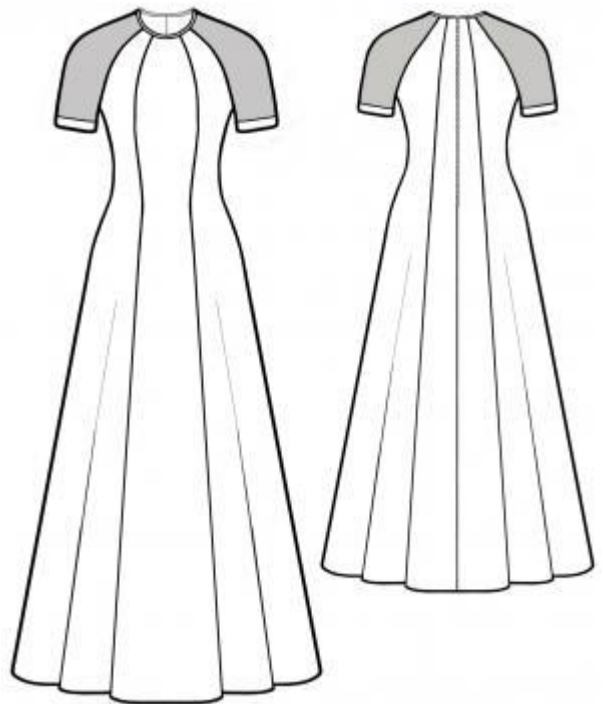
CUTTING:

The word, "beam" used on some patterns means "straight of grain". Some pieces will be cut on the fold, this is noted on the pattern piece. Mark all notches and other design features such as darts, pleats etc. from the pattern onto your fabric.

Seam allowances: 1 cm for all seams, 1 cm for hem.

Main fabric:

1. Center front part – 1 piece
2. Side back part – 2 pieces
3. Center back part – 2 pieces
4. Side front part – 2 pieces
5. Sleeve facing – 2 pieces



Chiffon:

1. Back sleeve – 2 pieces
2. Front sleeve – 2 pieces

Cut a piping of 4 cm width.

INSTRUCTIONS:

1. Stitch front/back vertical relieves and neaten them. Press front relieves toward front center, press back relieves toward back center.
2. Stitch sleeve seams and neaten them.
3. Stitch side seams and neaten them. Press side seams backwards.
4. Stitch sleeves into armholes.
5. Neaten middle back seam. Stitch middle back seam up to the closure notch. Press middle back seam and closure slit edges.
6. Overstitch the neckline with the piping. Fix piping ends by hand.
7. Neaten dress hem, fold it under and topstitch.
8. Press sleeve facing along the center. Apply the fusing to wrong side of sleeve facing so that the fusing was 1 cm beyond bending line.
9. Stitch facings as a ring. Neaten the seam and press it apart.
10. Stitch facing's doubled side to hem sleeve. Neaten the seam and press it toward the facing. Fold facing's open edge under by 1 cm and topstitch along joining seam.

Congratulations, your dress is ready! :)