

If the pattern has a double line around it, the seam allowances are included.

Note: By default, seam allowances are NOT included (single line) and will need to be added when laying out and cutting details.

Seam Allowance: 1 cm on all seams; hem guidelines are printed on pattern.

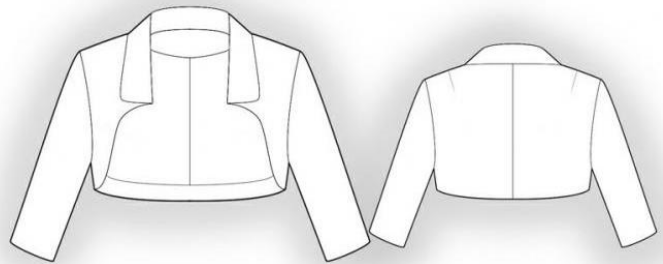
Important! Please print all the paper patterns and lay them out at the width of fabric you plan to use (usually from 90 to 150 cm) to see how much fabric you will need.

Don't forget to take into account pieces to be duplicated or cut on a fold. When sewing the garment, pay attention to notches. They must match up with corresponding pieces.

5865 Bolero with collar

Recommendations on fabric: thick dress fabric.

You will also need: fusible interfacing



CUTTING:

The word, “beam” used on some patterns means “straight of grain”. Some pieces will be cut on the fold, this is noted on the pattern piece. Mark all notches and other design features such as darts, pleats etc. from the pattern onto your fabric.

Main fabric:

- 1.Front part – 2 details.
- 2.Back part – 2 details.
- 3.Front facing – 2 details.
- 4.Back neckline facing – 1 detail.
- 5.Back hem facing – 1 detail.
- 6.Sleeve – 2 details.
- 7.Collar – 2 details.

Fusible interfacing:

- 1.Collar – 1 detail.

INSTRUCTIONS:

1. Apply fusible interfacing to upper collar. Put together collar parts right sides together and overstretch on short edges and outer edge. Slash seam allowances on round parts, turn the right side out, press.
2. Sew darts on back part. Press dart depths towards back center. Sew middle back seam. Serge and press to the left.
3. Sew shoulder and side seams. Serge and press onto back part.
4. Sew shoulder seams of front facing and back neckline facing. Press the seams apart. Sew side seams of front facing and back hem facing. Press the seams apart. Serge inner edge of front facing, back neckline facing and back hem facing.
5. Put bolero and facings right sides together. Overstretch front edge, hem, and neckline, inserting collar. Turn the right side out, adjust and press. Fix back facings onto side and shoulder seams.
6. Sew sleeve seams. Serge and press to the back part. Sew sleeves into armholes. Serge the seam.
7. Serge sleeve hem. Fold seam allowance inside and topstitch.

Congratulations, your bolero is ready! :)