

If the pattern has a double line around it, the seam allowances are included.

Note: By default, seam allowances are NOT included (single line) and will need to be added when laying out and cutting details.

Seam Allowance: 1 cm on all seams; hem guidelines are printed on pattern.

Important! Please print all the paper patterns and lay them out at the width of fabric you plan to use (usually from 90 to 150 cm) to see how much fabric you will need.

Don't forget to take into account pieces to be duplicated or cut on a fold. When sewing the garment, pay attention to notches. They must match up with corresponding pieces.

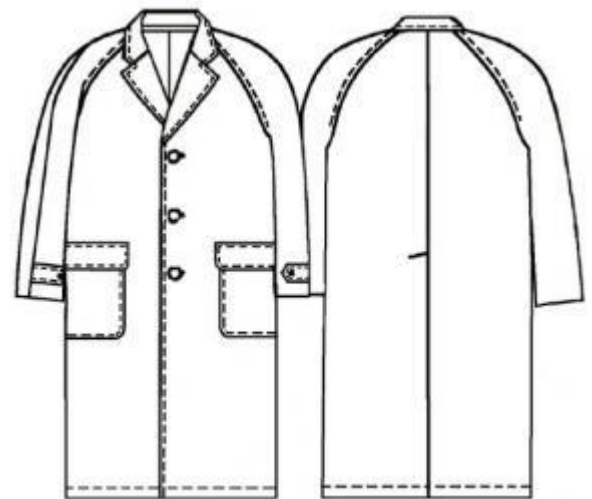
6014 Overfrakke med raglanærmer til mand

Recommendations on fabric: wool/semiwool fabrics suitable for coats

You will also need: lining; the fusing of 120 cm length and 140 cm width; 3 buttons of 25 mm diameter; 2 buttons of 15 mm diameter.

CUTTING:

The word, "beam" used on some patterns means "straight of grain". Some pieces will be cut on the fold, this is noted on the pattern piece. Mark all notches and other design features such as darts, pleats etc. from the pattern onto your fabric.



Main fabric:

Main fabric:

1. Sleeve stripe – 2 pieces
2. Back part – 2 pieces
3. Back sleeve – 2 pieces
4. Front sleeve – 2 pieces
5. Front band – 2 pieces
6. Flap – 2 pieces
7. Pocket – 2 pieces
8. Front part – 2 pieces
9. Inner collar – 1 piece

10. Stand-up collar – 2 pieces

11. Outer collar – 1 piece

Lining:

1. Back part+2 cm along middle line (for free-fit pleat)

2. Front part excluding front bands

3. Pocket is 3 cm shorter along upper edge

4. Both sleeves, flap, sleeve strap – without changes

Lining hems are 2 cm shorter than fabric one.

Fusing:

front part, inner collar, stand-up collar, pocket, flap, hem allowance.

INSTRUCTIONS:

1. Apply the fusing to wrong side of front part, inner collar, stand-up collar, pocket, flap, hem allowance.

2. Stitch the lining to pocket upper edge, turn right side out, adjust edges and make 1.5 cm stitch along upper edge.

3. Press pocket edges into wrong side and sew them on front parts with blind stitches. Make 1.5 cm stitch.

4. Overstitch the flap with lining, turn right side out and make 1.5 cm stitch.

5. Stitch upfolded flap to front part, fold it down and make 1.5 cm stitch.

6. Stitch back part along middle line up to the vent. Press allowances leftward and make 1.5 cm stitch on right side.

7. Fold left back part vent's allowance into right side and stitch along hem line. Then turn right side out and make 1.5-cm stitch.

8. Fold right back part's hem into right side and stitch along vent allowance's edge, then turn right side out.

9. Make the vent and fix vent's top with diagonal stitch.

10. Stitch side seams.

11. Stitch sleeves along lower seam.
12. Stitch sleeves into armholes.
13. Overstitch sleeve stripes with the lining, turn them right side out and make 1.5 cm stitch.
14. Lay sleeve stripes on sleeve's right side and tack along edges.
15. Stitch shoulder seam stitching sleeve stripes.
16. Stitch one stand-up to outer collar, stitch another stand-up to inner collar. Press allowances apart and make stitches along both side of the seam.
17. Stitch inner collar into garment neckline. Stitch outer collar to front bands.
18. Lay front bands joint with outer collar on the garment right sides together, adjust edges and overstitch front edgings and the collar. Turn right side out and stitch collars along lower edge.
19. Make 1.5 cm stitch along collar edge/front edgings.
20. Fold hem allowances into wrong side.
21. Make free-fit pleat and fix it under neckline and few cms above garment's hem. Stitch lining details in the same way as fabric's, leave a segment of 20 cm length into an elbow seam. Lay the lining into fabric garment right sides together, coinciding middle back line and shoulder seams. Overstitch the garment with lining along front bands and neckline. Make a lapping pleat into hem and stitch the lining to hem edge, side vent facing and along back vent facing's edge (before you do it, slash horizontally lining allowances at back vent's hem). Turn the garment right side out through sleeve segment, then stitch segment's edges together.
22. Make 1.5 cm stitch along the hem.
23. Make buttonholes into left front part and sew buttons on front edging and sleeve stripes.

Congratulations, your coat is ready! :)