

If the pattern has a double line around it, the seam allowances are included.

**Note:** By default, seam allowances are NOT included (single line) and will need to be added when laying out and cutting details.

Seam Allowance: 1 cm on all seams; hem guidelines are printed on pattern.

**Important!** Please print all the paper patterns and lay them out at the width of fabric you plan to use (usually from 90 to 150 cm) to see how much fabric you will need.

Don't forget to take into account pieces to be duplicated or cut on a fold. When sewing the garment, pay attention to notches. They must match up with corresponding pieces.

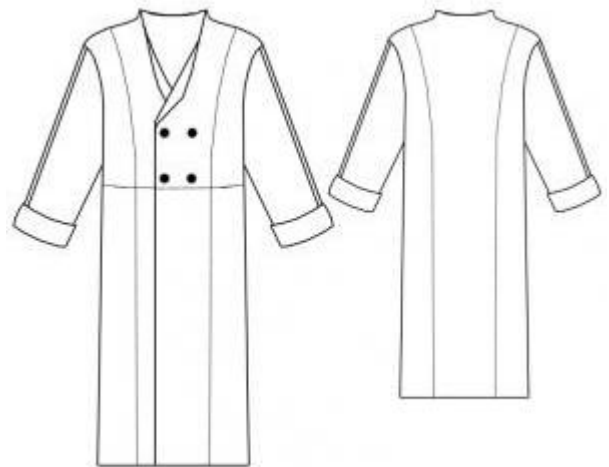
## 6065 Men's sheepskin coat

Recommendations on fabric: artificial/natural sheepskin of 150 cm width

You will also need: 4 buttons

### CUTTING:

The word, "beam" used on some patterns means "straight of grain". Some pieces will be cut on the fold, this is noted on the pattern piece. Mark all notches and other design features such as darts, pleats etc. from the pattern onto your fabric.



### Main fabric:

1. Center back part – 2 pieces
2. Side back part – 2 pieces
3. Side upper front part – 2 pieces
4. Side lower front part – 2 pieces
5. Upper center front part – 2 pieces
6. Lower center front part – 2 pieces
7. Pocket – 2 pieces
8. Sleeve left part – 2 pieces
9. Sleeve right part – 2 pieces

## INSTRUCTIONS:

NB! Stitch all details fur side together; seam allowances must be on right (suede) side.

1. Stitch middle back details. Straighten naps along the seam with the needle.
2. Stitch upper side back part to lower side back part, straighten naps.
3. Stitch middle back part to side parts.
4. Stitch upper center front part to lower center front part.
5. Lay pockets on lower side front parts fur sides together and stitch them together along upper edges at 1 cm from edges. Lay lower side front part on upper ones and stitch pockets to upper front parts; do not catch lower parts.
6. Stitch side parts on center front parts; do not catch sacking.
7. Stitch shoulder/side seams.
8. Stitch sleeve left part to sleeve right part. Stitch sleeves into armholes.
9. Topstitch a piece of fur to buttonhole's part (wrong side) to make quadrates for buttonholes. Cut buttonholes neatly. Sew buttons.

Congratulations, your sheepskin coat is ready! :)