

If the pattern has a double line around it, the seam allowances are included.

Note: By default, seam allowances are NOT included (single line) and will need to be added when laying out and cutting details.

Seam Allowance: 1 cm on all seams; hem guidelines are printed on pattern.

Important! Please print all the paper patterns and lay them out at the width of fabric you plan to use (usually from 90 to 150 cm) to see how much fabric you will need.

Don't forget to take into account pieces to be duplicated or cut on a fold. When sewing the garment, pay attention to notches. They must match up with corresponding pieces.

7076 Waistcoat with patch pockets and hood

Recommendations on fabric: moreen

You will also need: fusible interfacing, 1 separable zipper, 3 clasps, Velcro, decorative cord.

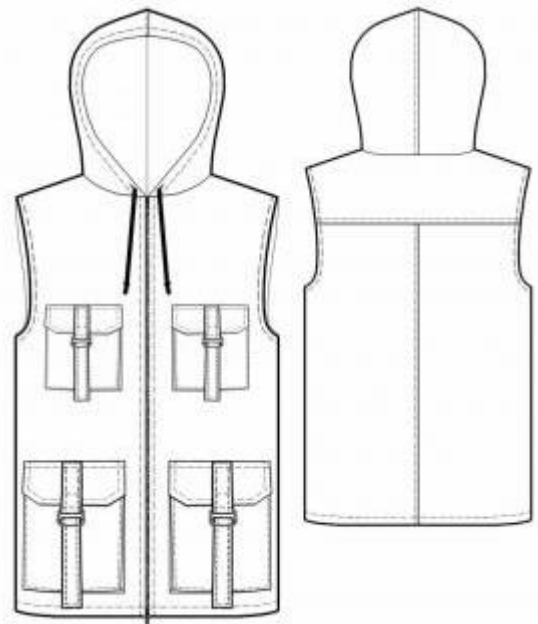
CUTTING:

The word, "beam" used on some patterns means "straight of grain". Some pieces will be cut on the fold, this is noted on the pattern piece. Mark all notches and other design features such as darts, pleats etc. from the pattern onto your fabric.

Seam allowance: 1 cm for all seams, 3 cm for hem, for pocket upper edges and short edges of side-lower parts.

Main fabric:

1. Back yoke – 1 folded piece
2. Back part – 2 pieces
3. Bust right pocket – 1 piece
4. Bust right pocket flap – 2 pieces
5. Bust pocket upper half-belt – 1 piece
6. Bust pocket lower half-belt – 1 piece
7. Lower pocket – 2 pieces



8. Lower pocket flap – 4 pieces
9. Lower pocket upper flap – 2 pieces
10. Lower pocket lower flap – 2 pieces
11. Front part – 2 pieces
12. Front band – 2 pieces
13. Back part facing – 1 piece
14. Lower pocket lower-side part – 2 pieces
15. Right bust pocket lower-side part – 1 piece
16. Hood – 2 pieces
17. Hood facing – 1 piece

Fusible interfacing: front band, back neckline fusing, flap details.

INSTRUCTIONS:

1. Apply the interfacing to wrong side of front band, back neckline fusing, flap details.
2. Lay flap details right side together and overstitch along three sides. Cut overstitching seams, turn the flap right side out, neaten it and press. Make decorative stitch along flap perimeter. Topstitch Velcro “hair” segments on flaps according to marks. Remove tacking.
3. Fold the half-belt along the center and overstitch along long and one of short edges. Turn half-belt right side out, neaten and press it. Make decorative stitch along half-belt perimeter. Do the same for all half-belts. Remove tacking.
4. Stitch hood details and neaten the seam. Overstitch hood outer edge with facing. Make buttonholes into facing. Fold the facing into wrong side, fold free edge under and topstitch towards the hood.
5. Stitch lower-side parts to pockets right side together and inserting lower half-belts between parts and pockets. Press pocket lower edges into wrong side, fold it under and topstitch. Topstitch hooked Velcro segments on the pocket according to marks.
6. Fold free edge of pocket lower-side part into wrong side and topstitch it on front part according to marks.
7. Stitch flaps to front parts inserting upper half-belts. Press flaps downwards and topstitch close to joining seam.
8. Lay front parts right sides together, adjust edges and measure edging lengths. Stitch the zipper to edging. Fold closure edgings and press them into wrong side.

9. Stitch middle back edge and neaten it. Press seam allowance leftwards, topstitch left back detail along the seam. Stitch back yoke to back part and press it towards yoke; topstitch the yoke.
10. Stitch side/shoulder seams. Neaten side/shoulder seams and press them backwards.
11. Stitch back neckline facing to front bands. Neaten facings and front band outer edges. Lay front band on front part right sides together and overstitch along edging and neckline, inserting the hood between them (on front part side). Neaten edging lower corner. Turn edgings right side out and press seams.
12. Neaten armhole allowances and press them into wrong side and topstitch. Press garment hem into wrong side, fold it under and topstitch.
13. Make decorative stitch along the zipper at 0.5 cm distance. Pull the cord into hood loops.

Congratulations, your waistcoat is ready! :)