

If the pattern has a double line around it, the seam allowances are included.

Note: By default, seam allowances are NOT included (single line) and will need to be added when laying out and cutting details.

Seam Allowance: 1 cm on all seams; hem guidelines are printed on pattern.

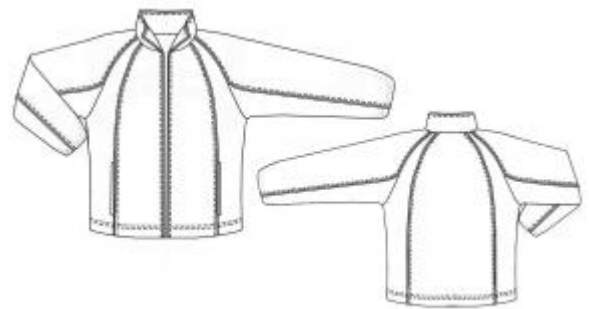
Important! Please print all the paper patterns and lay them out at the width of fabric you plan to use (usually from 90 to 150 cm) to see how much fabric you will need.

Don't forget to take into account pieces to be duplicated or cut on a fold. When sewing the garment, pay attention to notches. They must match up with corresponding pieces.

7151 Sports jacket with raglan sleeves

Recommendations on fabric: whipcord (polyester), knit fabric or fleece can be used as lining.

You will also need: Padding, fusible interfacing, 1 separable zipper (the length of zipper depends on the length of the garment front including stand collar), cord or piping; elastic of 3 cm wide for cuffs, elastic cord for hem, 2 fasteners or cord, 4 metal eyelets.



CUTTING:

The word, "beam" used on some patterns means "straight of grain". Some pieces will be cut on the fold, this is noted on the pattern piece. Mark all notches and other design features such as darts, pleats etc. from the pattern onto your fabric.

Seam allowance: hem and hem of sleeves – 4.5 cm, along the edge of lining and button stand – 0 cm.

Main fabric:

1. Central front - 2 details
2. Central back - 1 detail
3. Side front – 2 details
4. Side back – 2 details
5. Central part of sleeve - 2 details

6. Side part of sleeve - 4 details
7. Collar- 2 details
8. Button stand - 2 details
9. Of-set welt – 2 details

Cut a bias tape of 3.5 cm width for piping. Length of bias tapes depends on the length of piping. After making piping, seam allowance of 1 cm should be left, otherwise regulate the width of tapes at your pleasure.

Lining:

1. Front - 2 details
2. Back - 1 detail
3. Sleeve - 2 details
4. Pocket bag - 4 details

Padding:

Apply padding to the top collar, topstitching it along contour.

INSTRUCTIONS:

1. Piping: Sew together tapes, press seams. Fold the made tape in half, insert the cord, and put the stitch along the contour of the cord.
2. Pockets in seam with top-stitched off-set welt: Apply fusible interfacing to off-set welt, fold in half and overstitch on sides. Turn out, press, and stitch. Topstitch piping onto central front. Stitch pocket bag to side front. Put off-set welt onto central front (right sides together), then put pocket bag and topstitch with one seam on pocket opening. Turn out, press, and stitch pocket opening. Sew pocket bags. Stitch side fronts to central fronts. Stitch. Stay-stitch on pocket opening, topstitch off-set welts onto front side. The edges of pocket bags should get into zipper connecting seam and reach hem line.
3. Main fabric details assembly: Stitch side parts to back, inserting piping. Stitch connecting seams. Stitch side parts of sleeves to central parts, inserting piping. Stitch sleeves to front and back. Stitch sleeve connecting seam on rounded part. Sew the side seams and seams of sleeves. Sew top collar into the neckline.
4. Lining: Topstitch button stand onto lining of front, having pressed beforehand inner edge of button stand. Sew lining of jacket. Sew lower collar into the neckline of lining.
5. Zipper: Put half of zipper to edge of button stand right sides together (zipper blade are directed from button stand). Overstitch edges of front bands and of collar with lining,

sewing in zipper at the same time. Turn garment right side out.

6. Get eyelets along the edge of jacket. Press hem and hem of sleeves, turning under first at 1cm, then at 3.5 cm. Topstitch hem of the garment and hem of sleeves, leaving a slit in sleeve for elastic. Get elastic into the hem of sleeves.

7. Stitch button stand and collar of jacket.

8. Press jacket when ready.

9. Get cord into hem of jacket.

Congratulations, your jacket is ready! :)